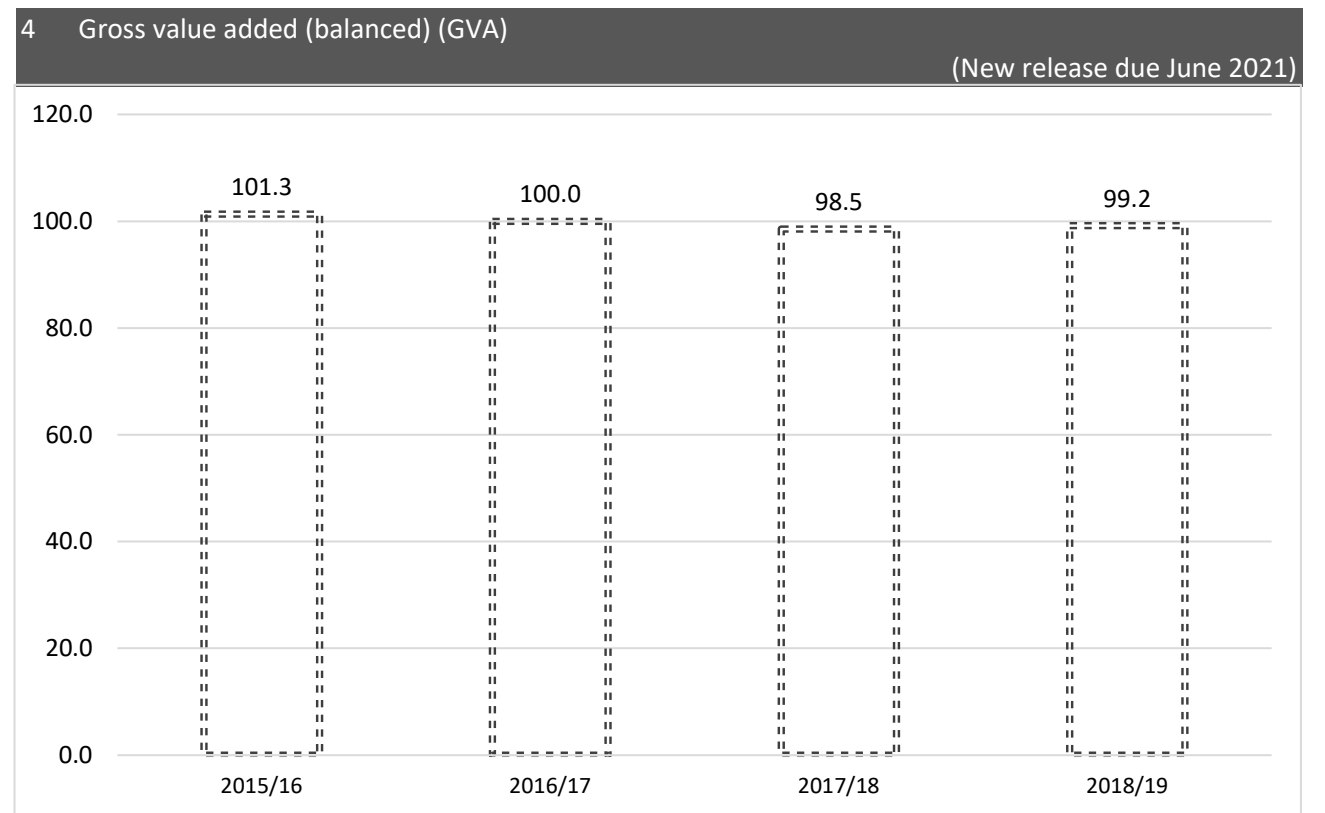
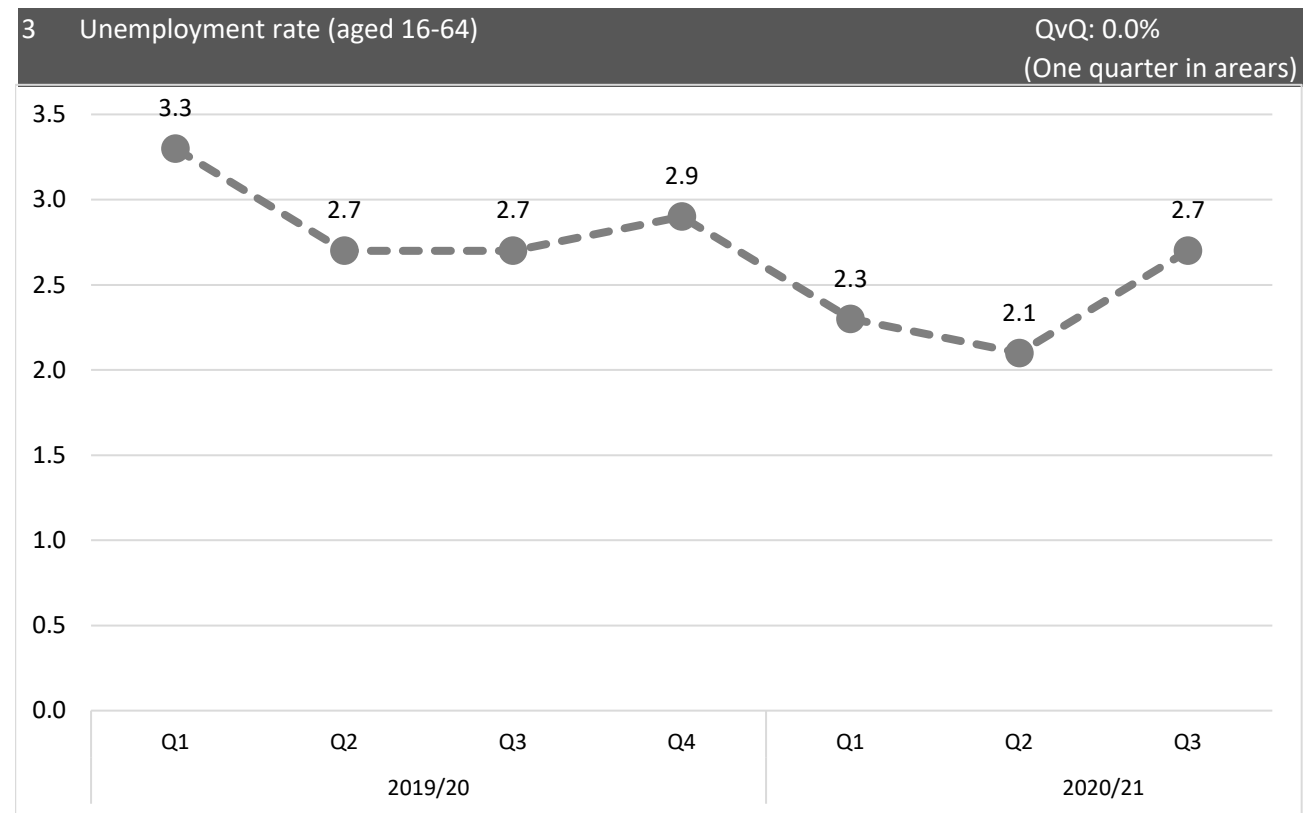
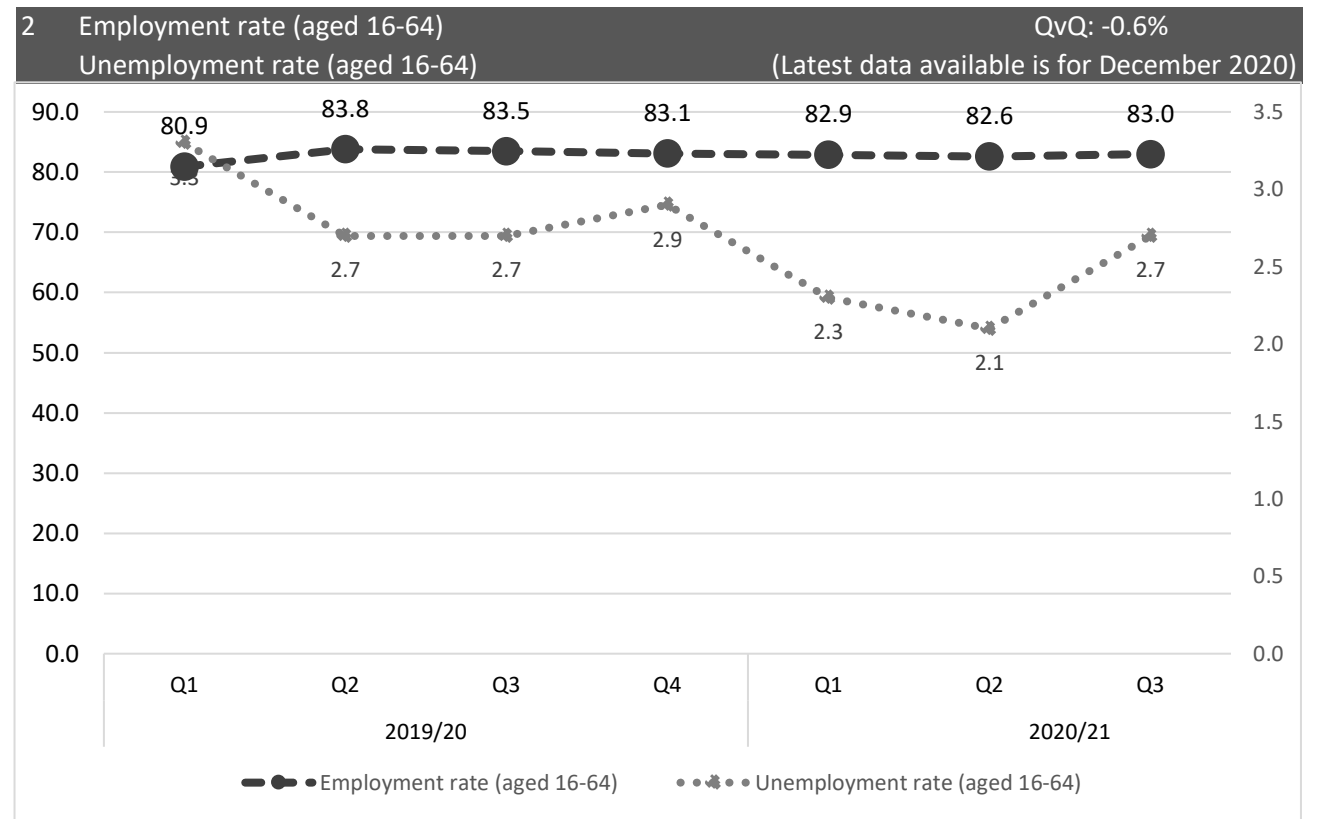
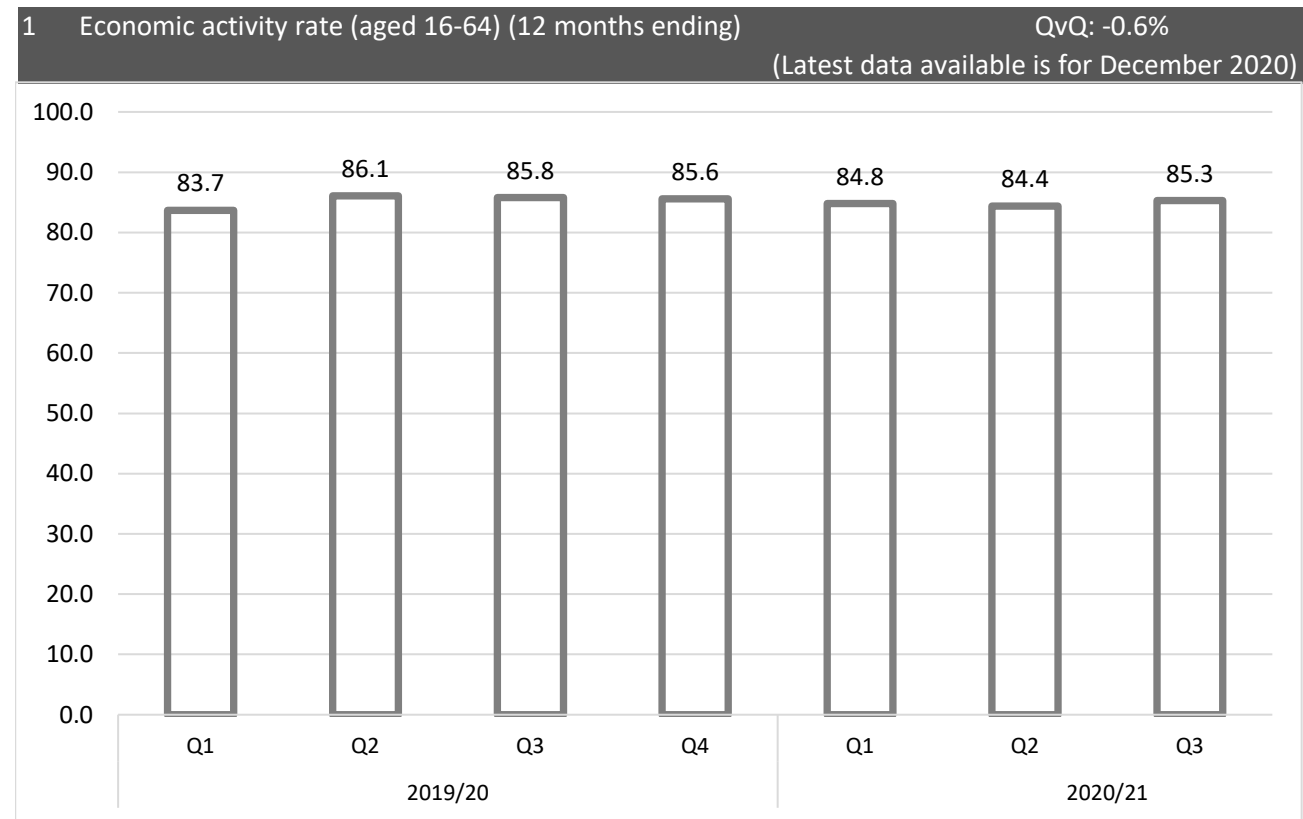


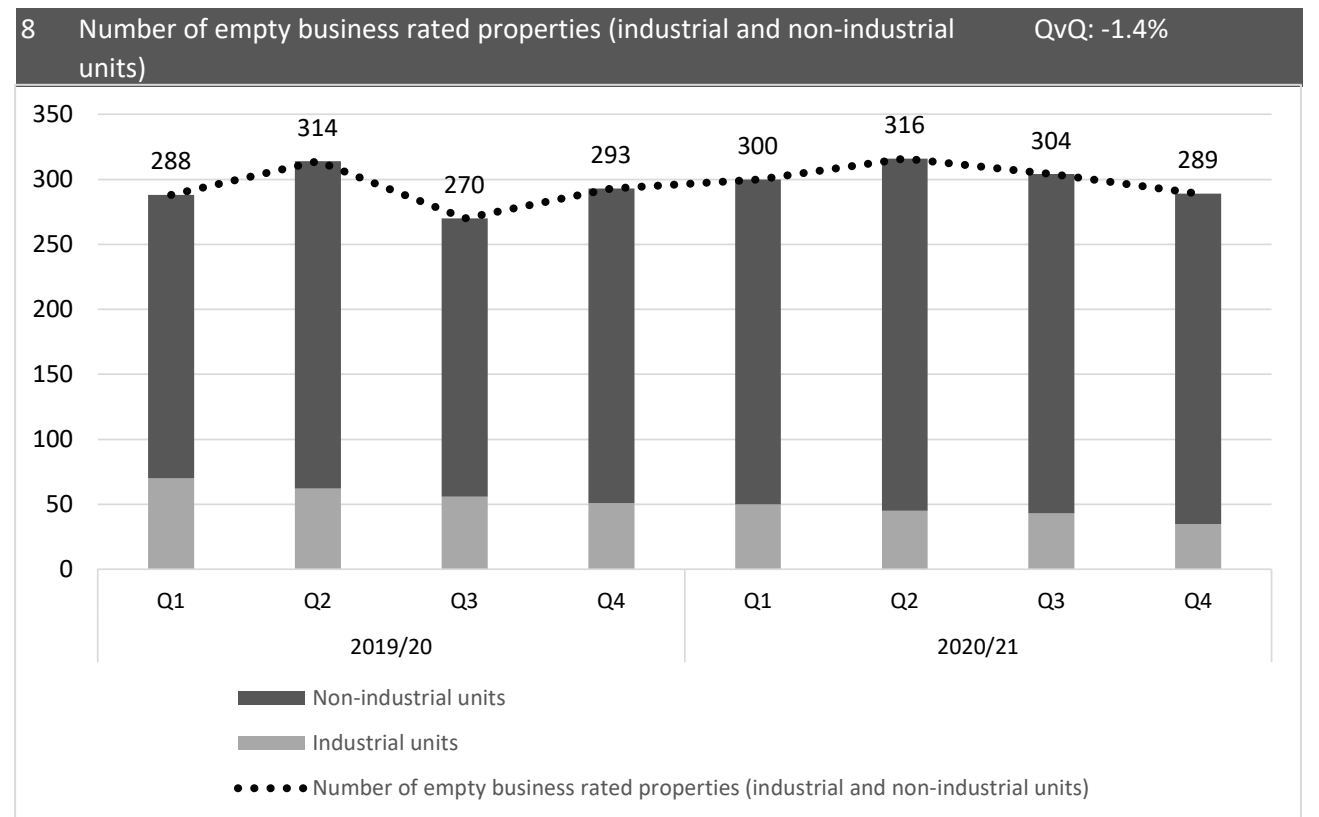
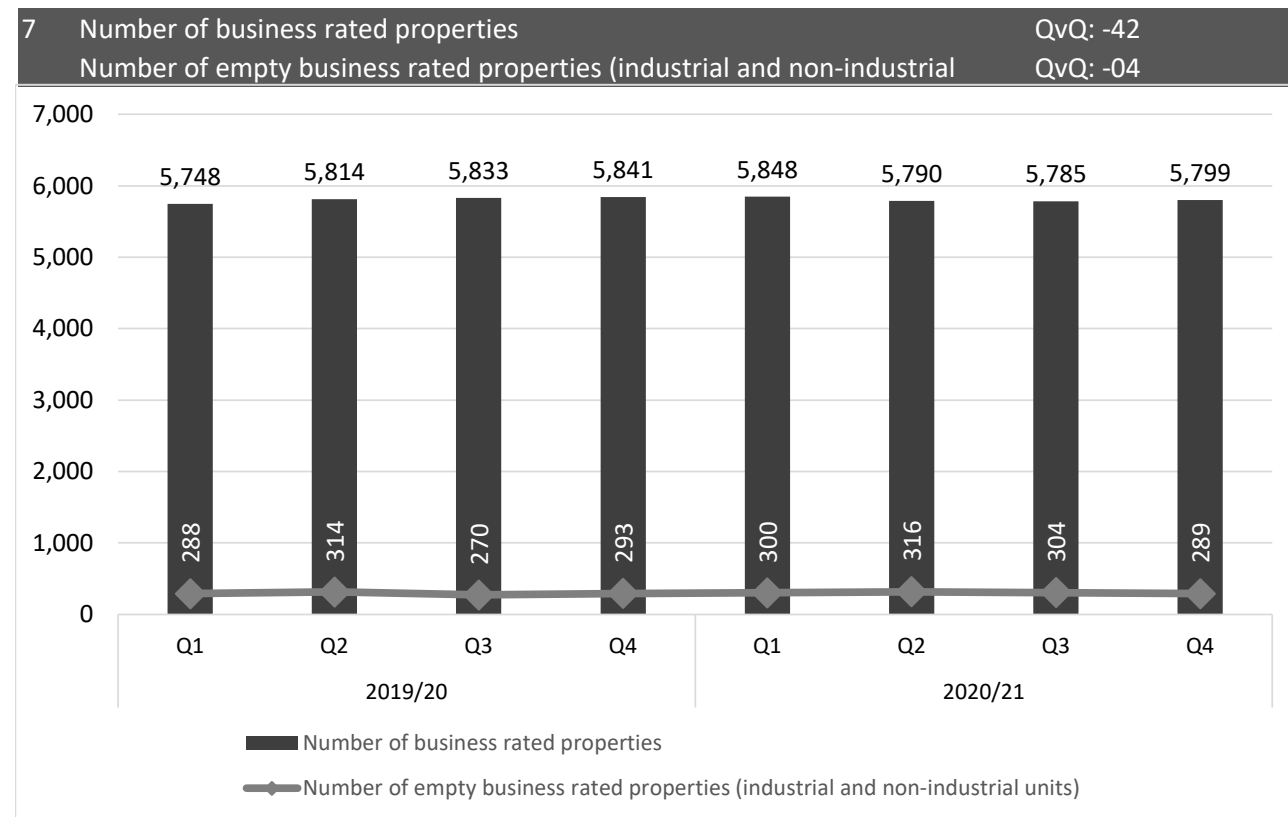
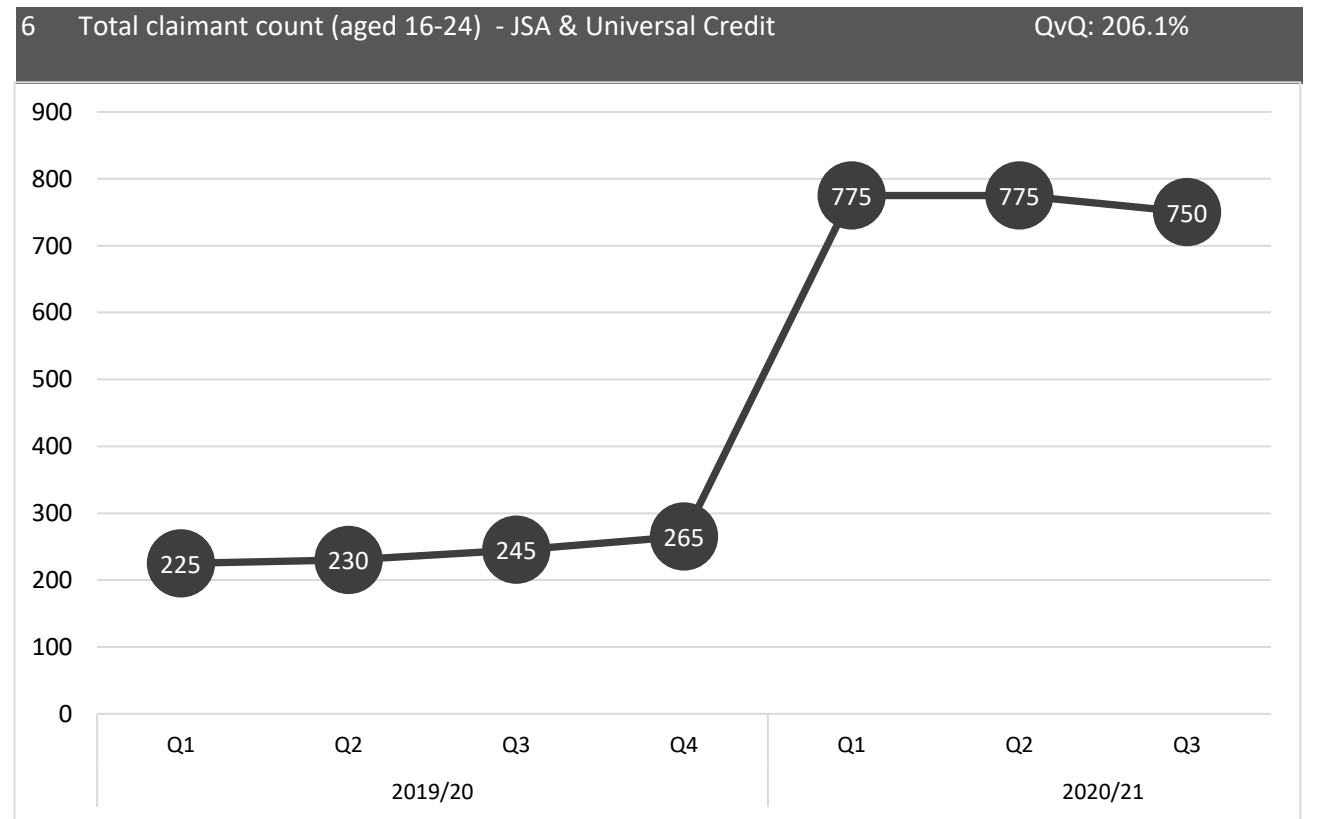
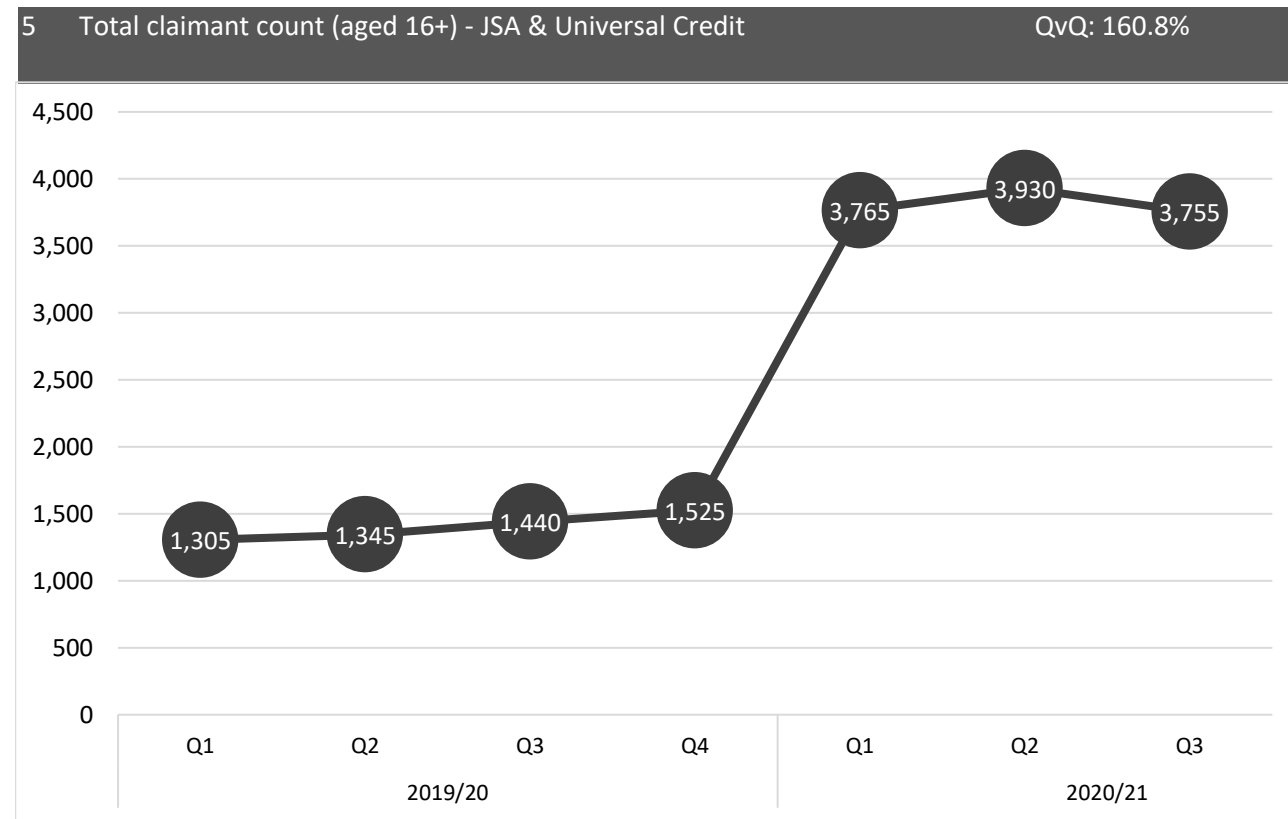
Appendix A: Influencer Measures Dashboard 2020/21 (current qtr v same qtr last year)

Economy (Grey) | Social Care (blue) | Environment (Green)



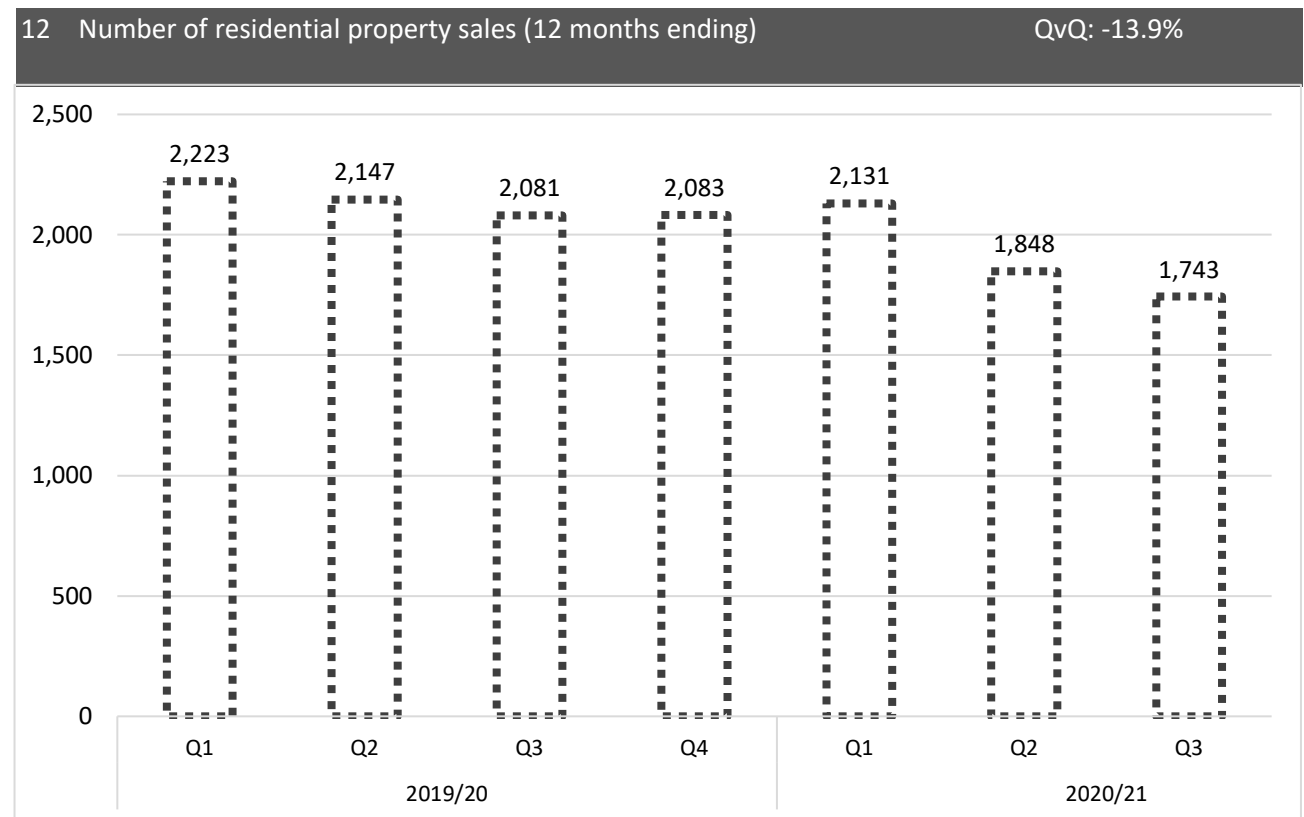
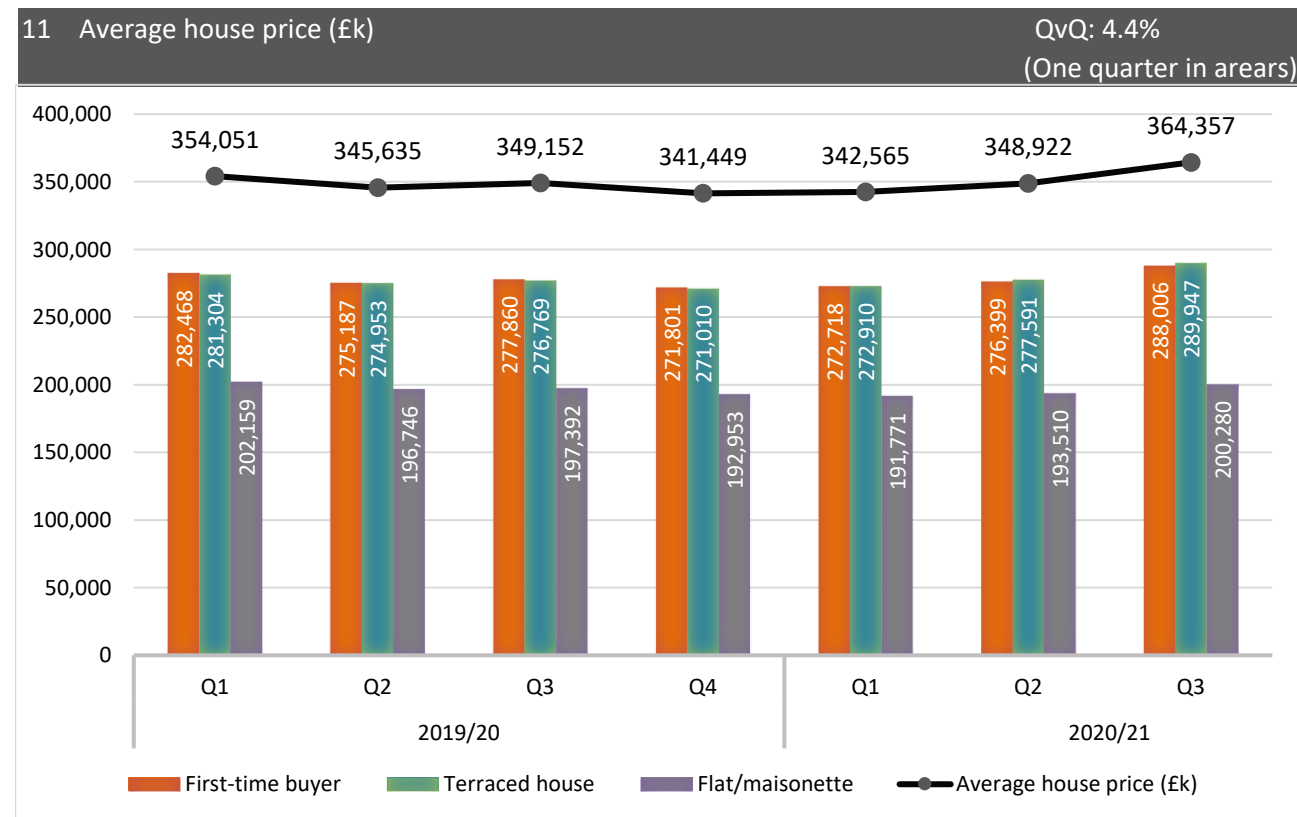
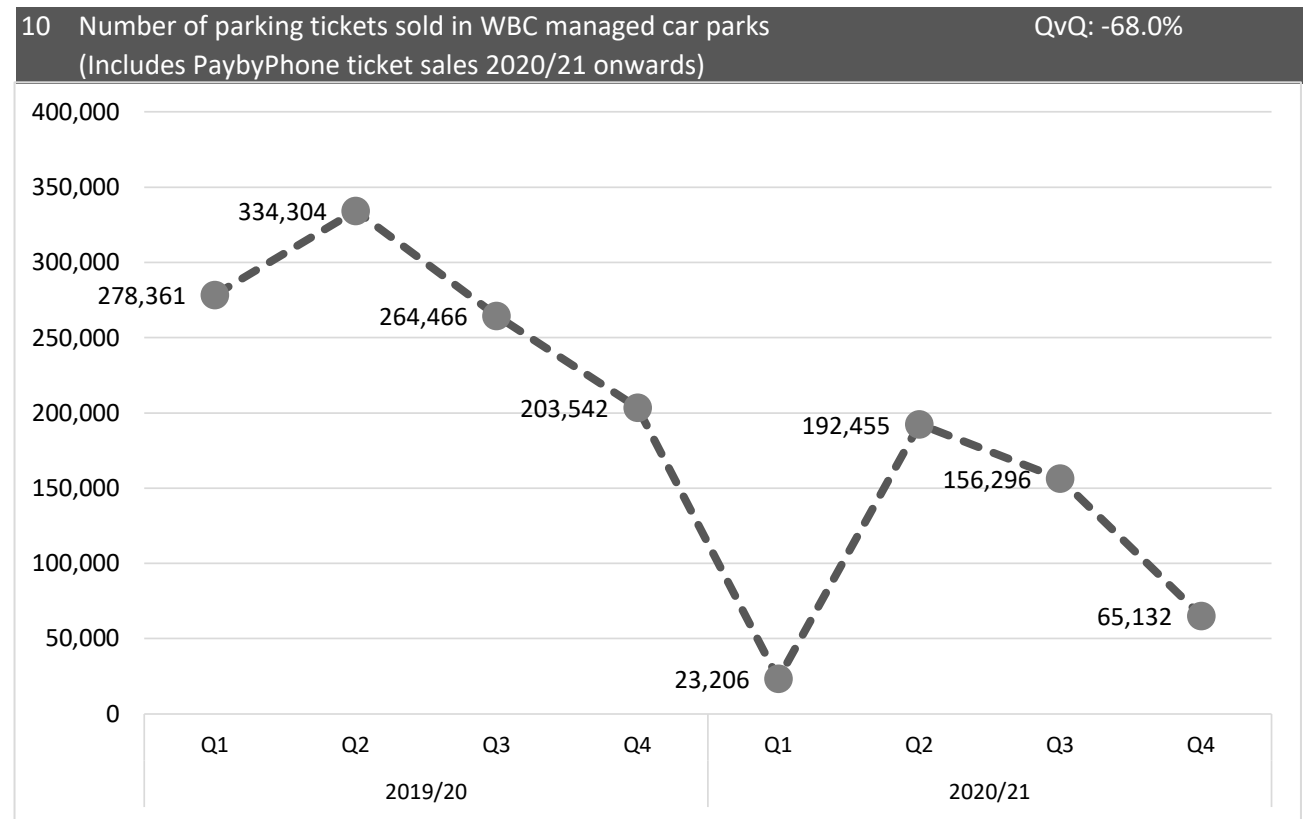
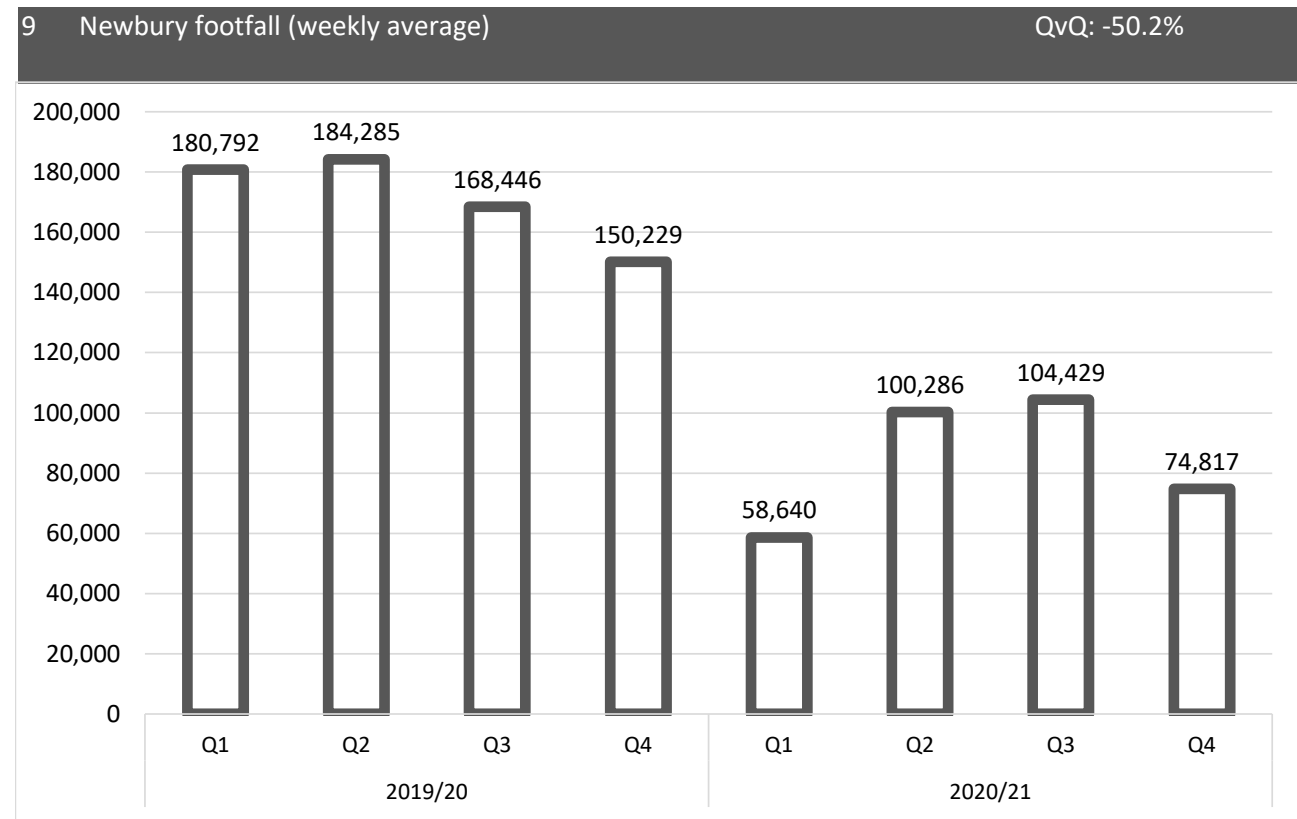
Appendix A: Influencer Measures Dashboard 2020/21 (current qtr v same qtr last year)

Economy (Grey) | Social Care (blue) | Environment (Green)



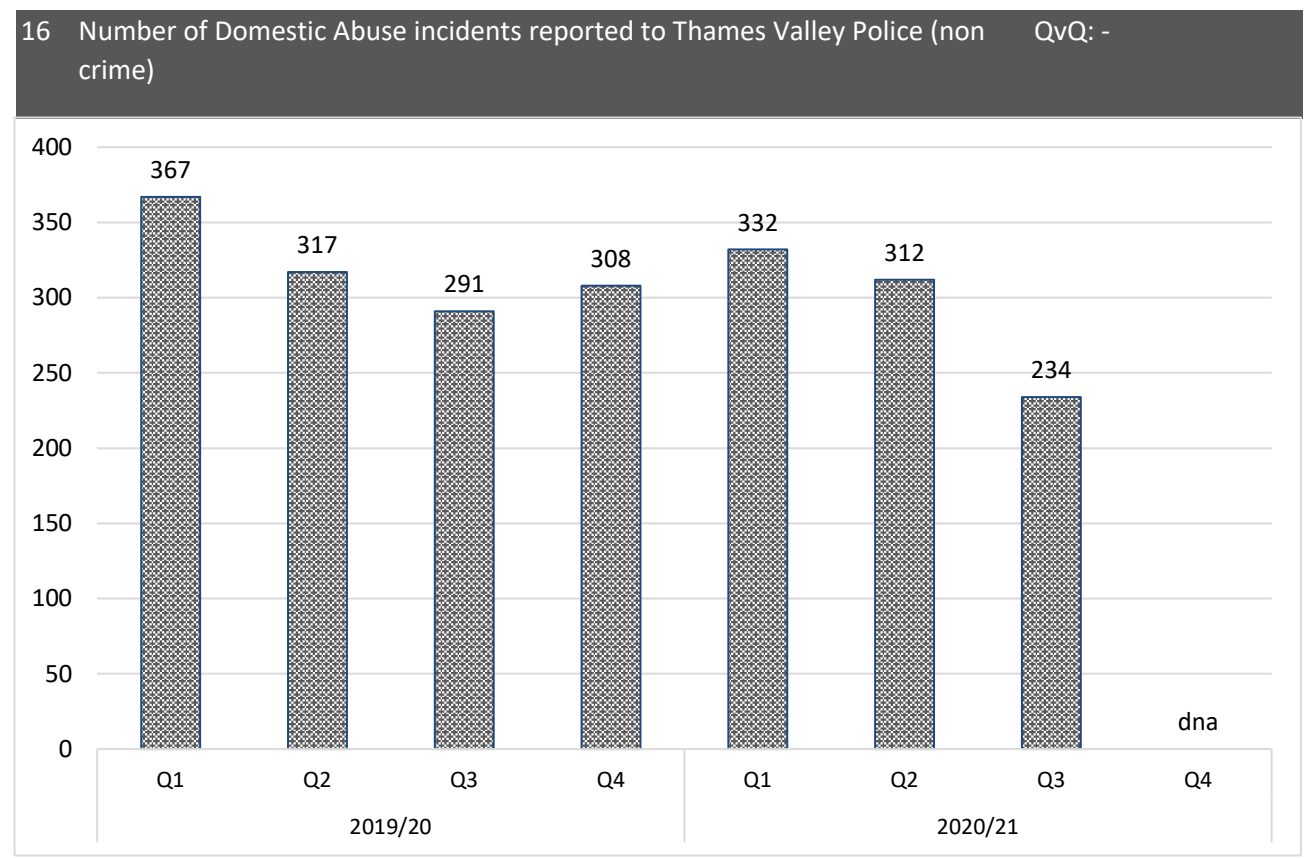
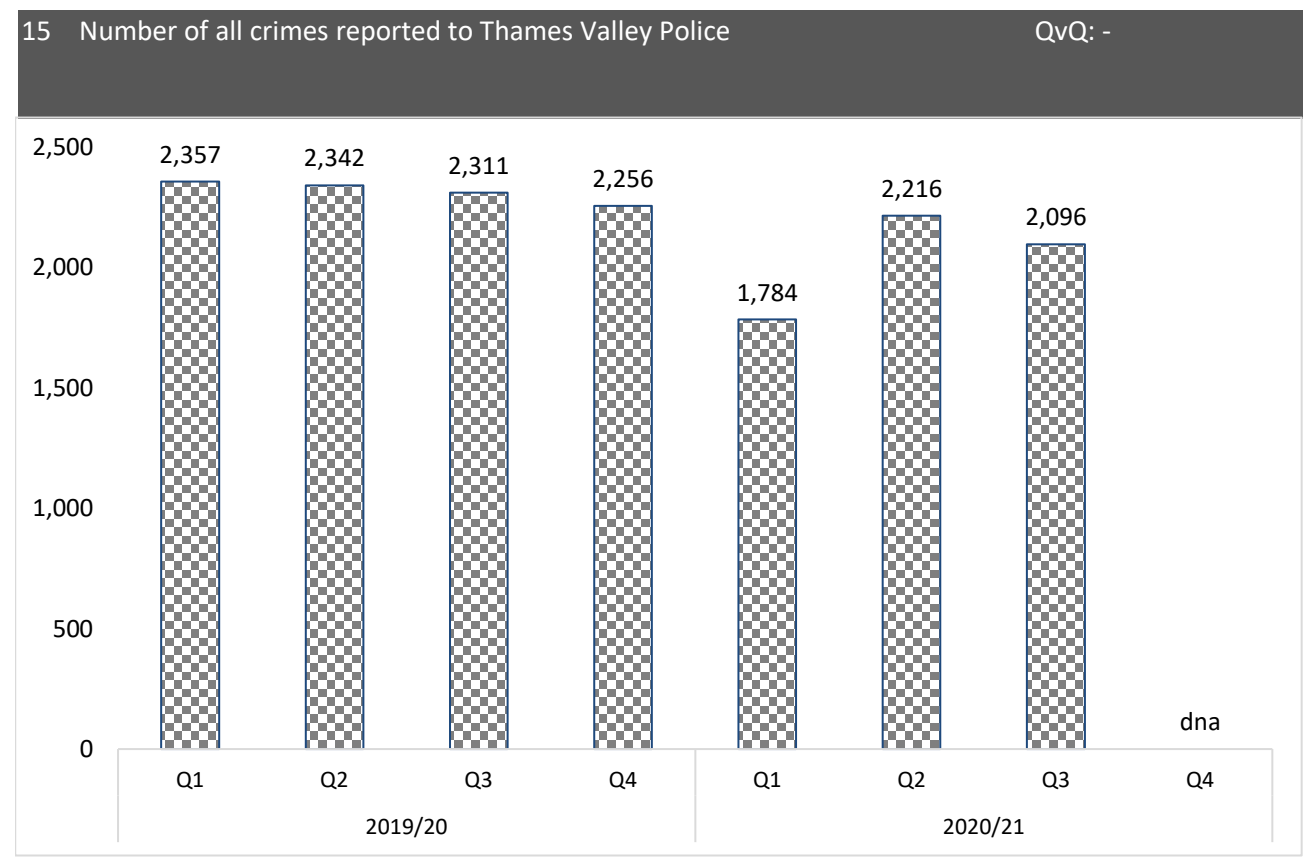
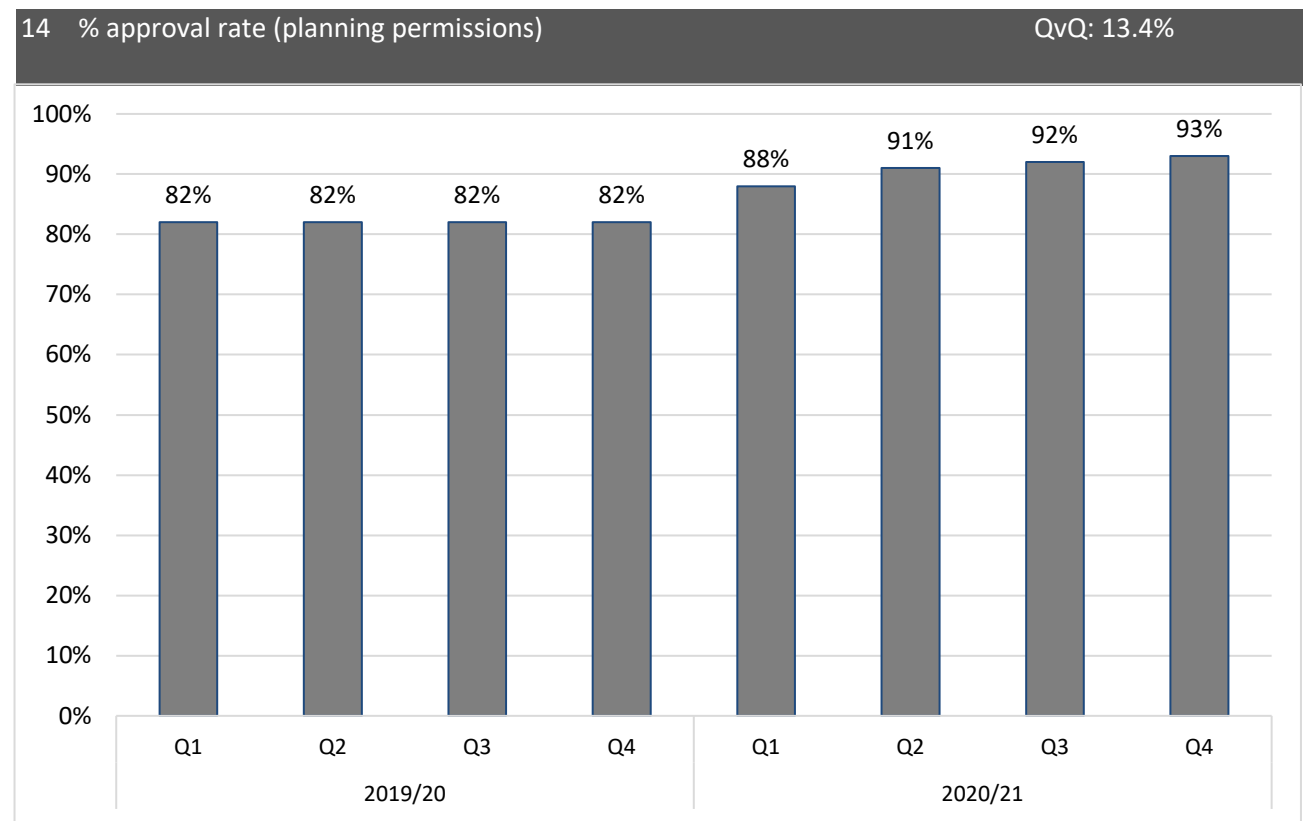
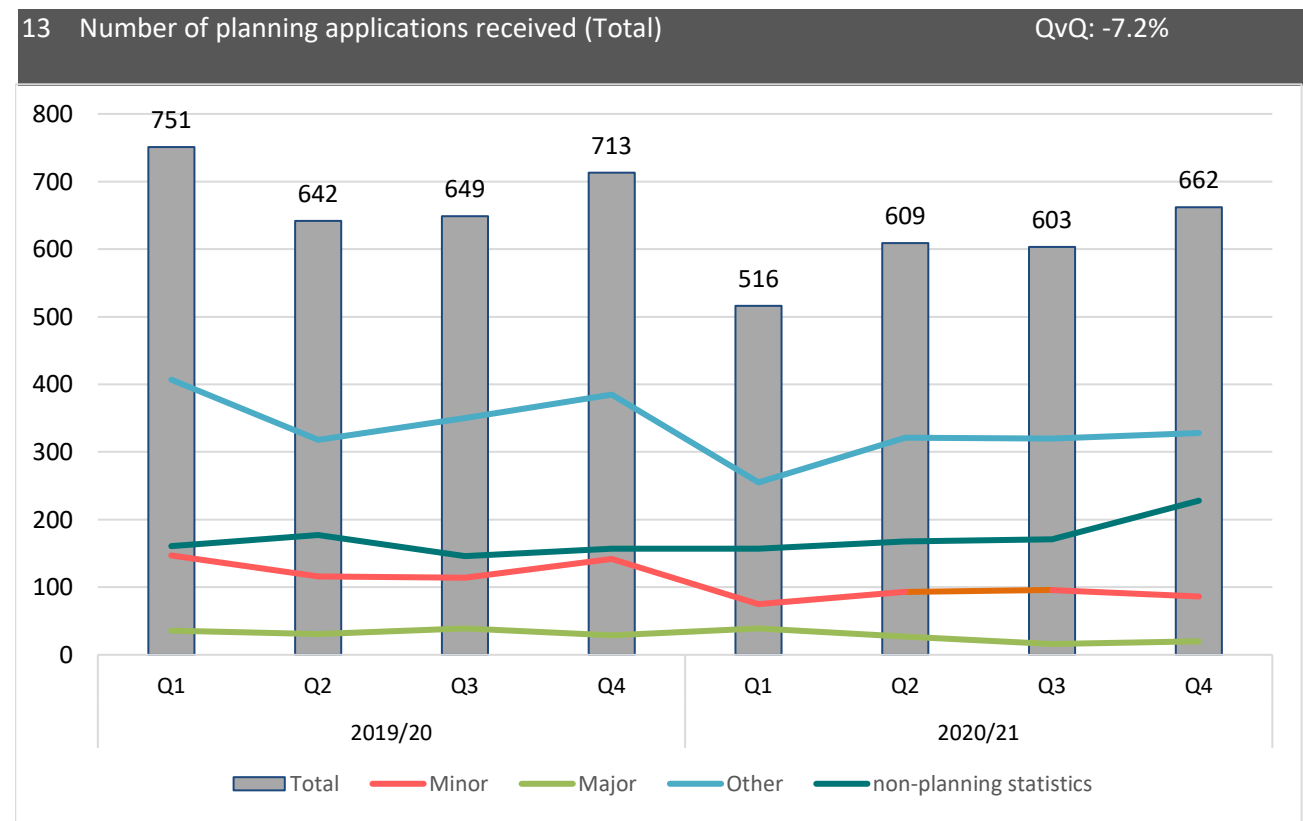
Appendix A: Influencer Measures Dashboard 2020/21 (current qtr v same qtr last year)

Economy (Grey) | Social Care (blue) | Environment (Green)



Appendix A: Influencer Measures Dashboard 2020/21 (current qtr v same qtr last year)

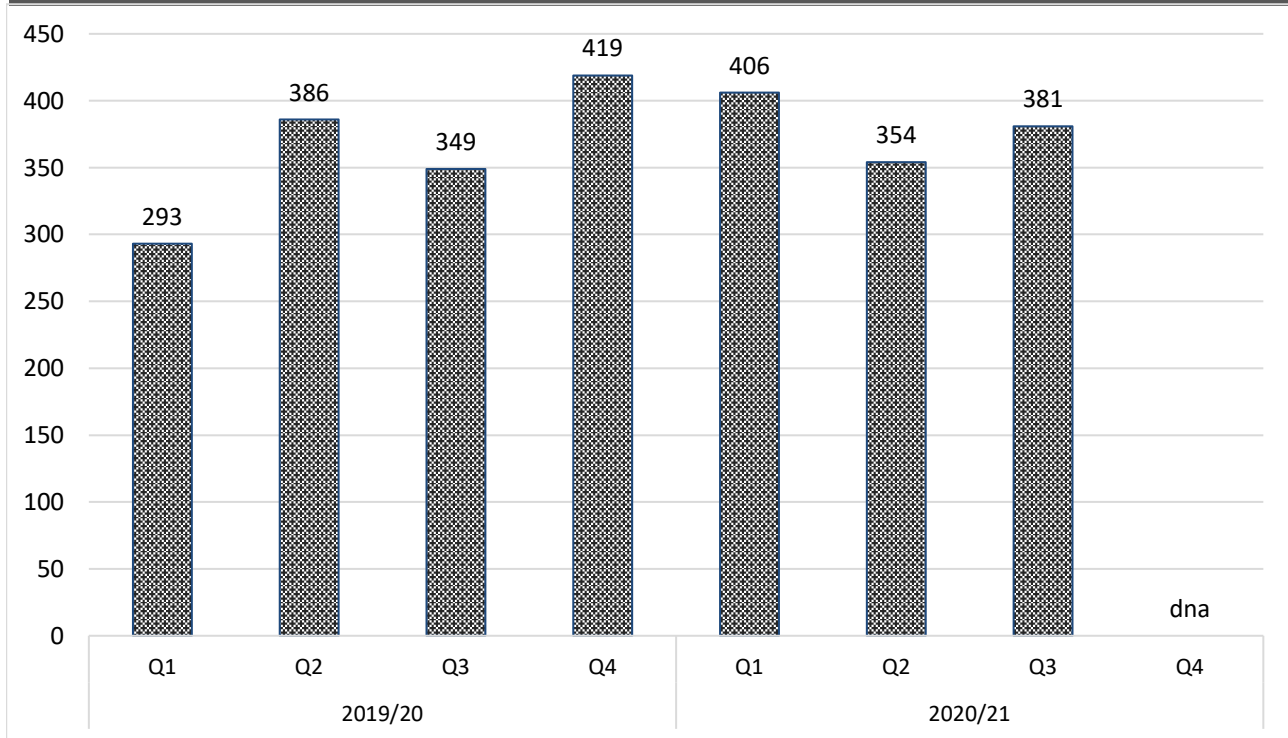
Economy (Grey) | Social Care (blue) | Environment (Green)



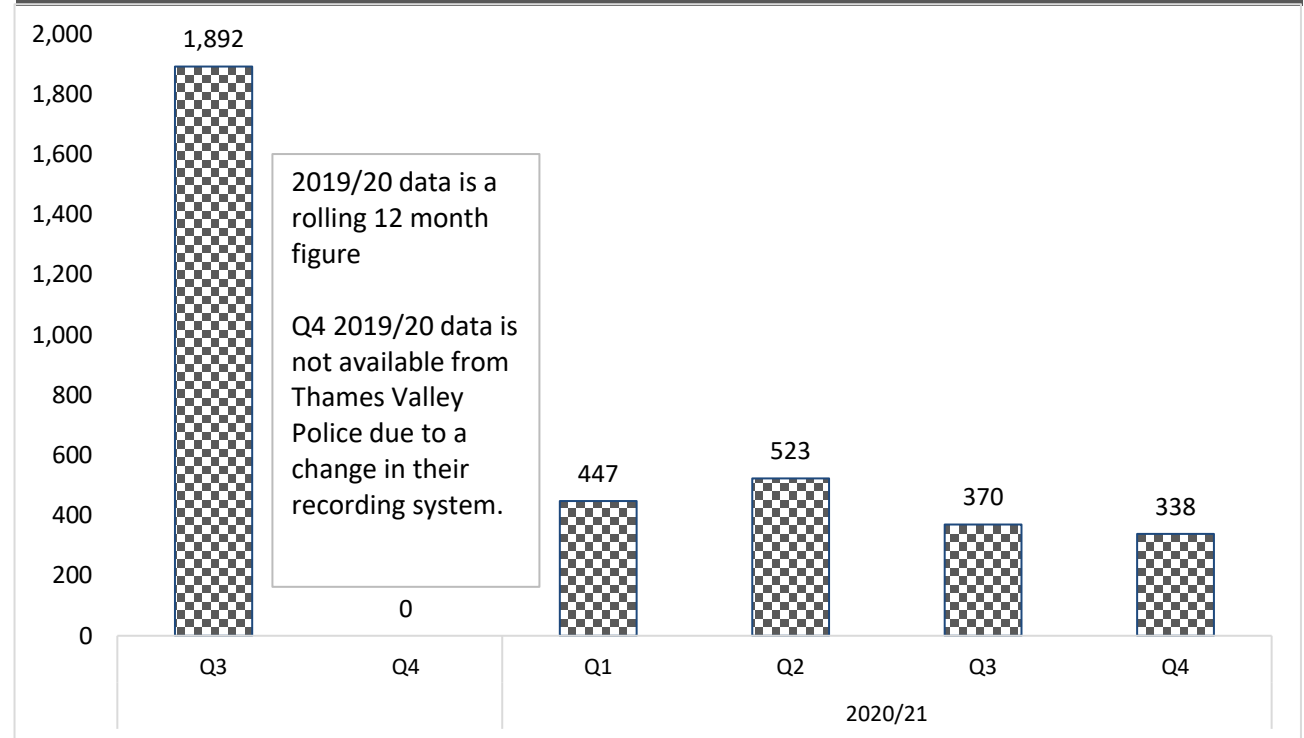
Appendix A: Influencer Measures Dashboard 2020/21 (current qtr v same qtr last year)

Economy (Grey) | Social Care (blue) | Environment (Green)

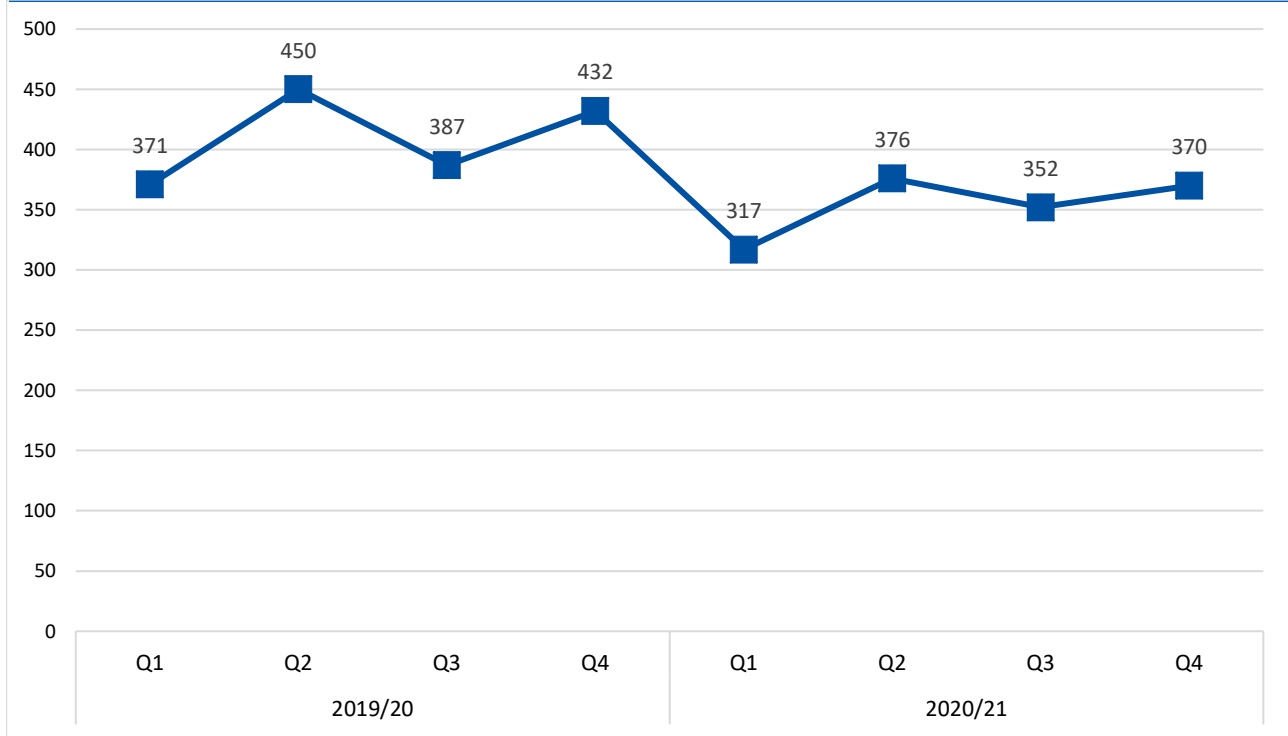
17 Number of Domestic Abuse incidents reported to Thames Valley Police (recorded crimes) QvQ: -



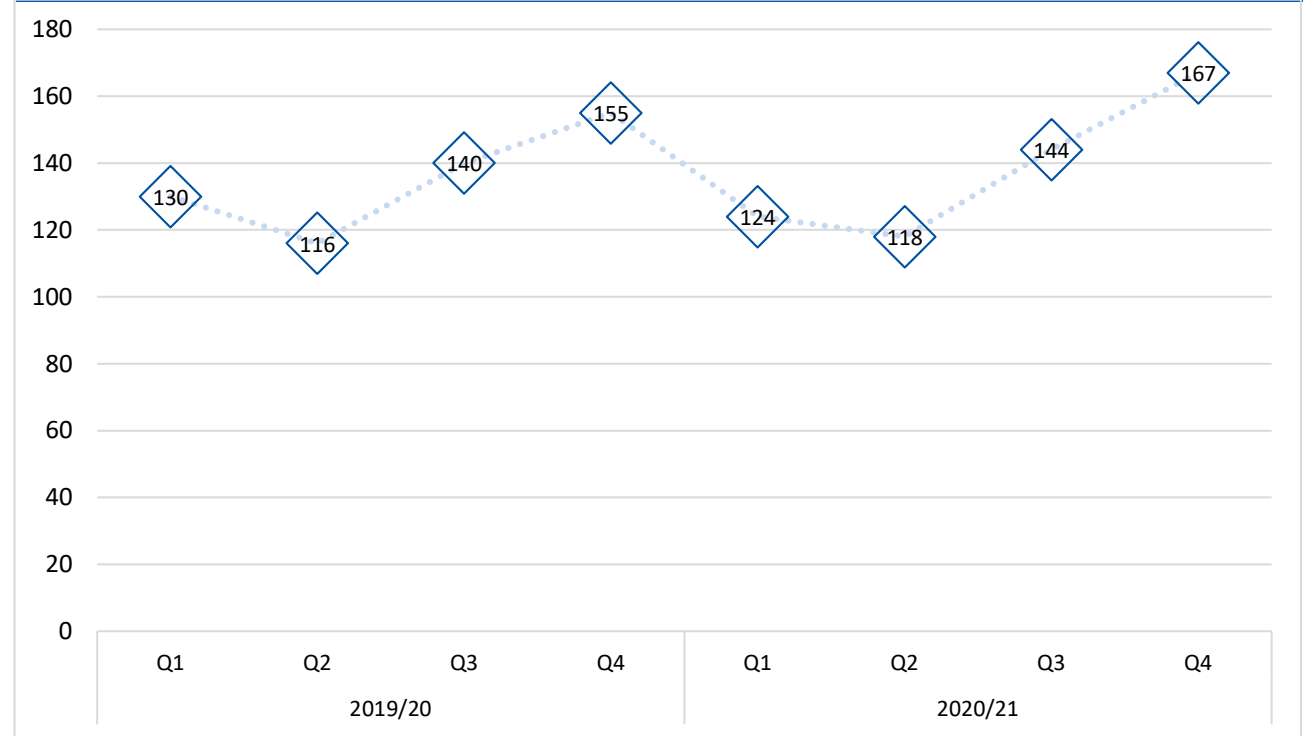
18 Number of anti-social behaviour (ASB) incidents reported to Thames Valley Police QvQ: -



19 Number of referrals received (all) (Children and Family Services) QvQ: -14.4%

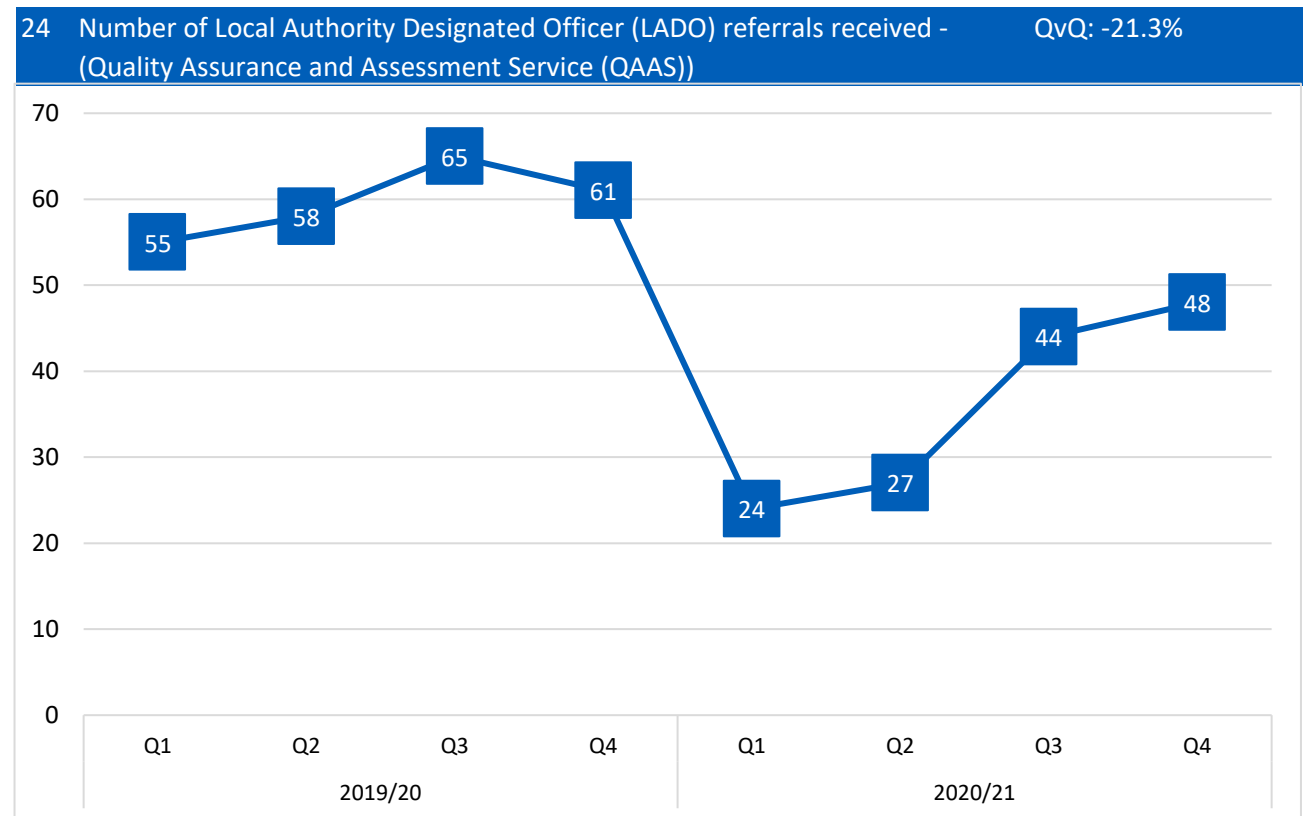
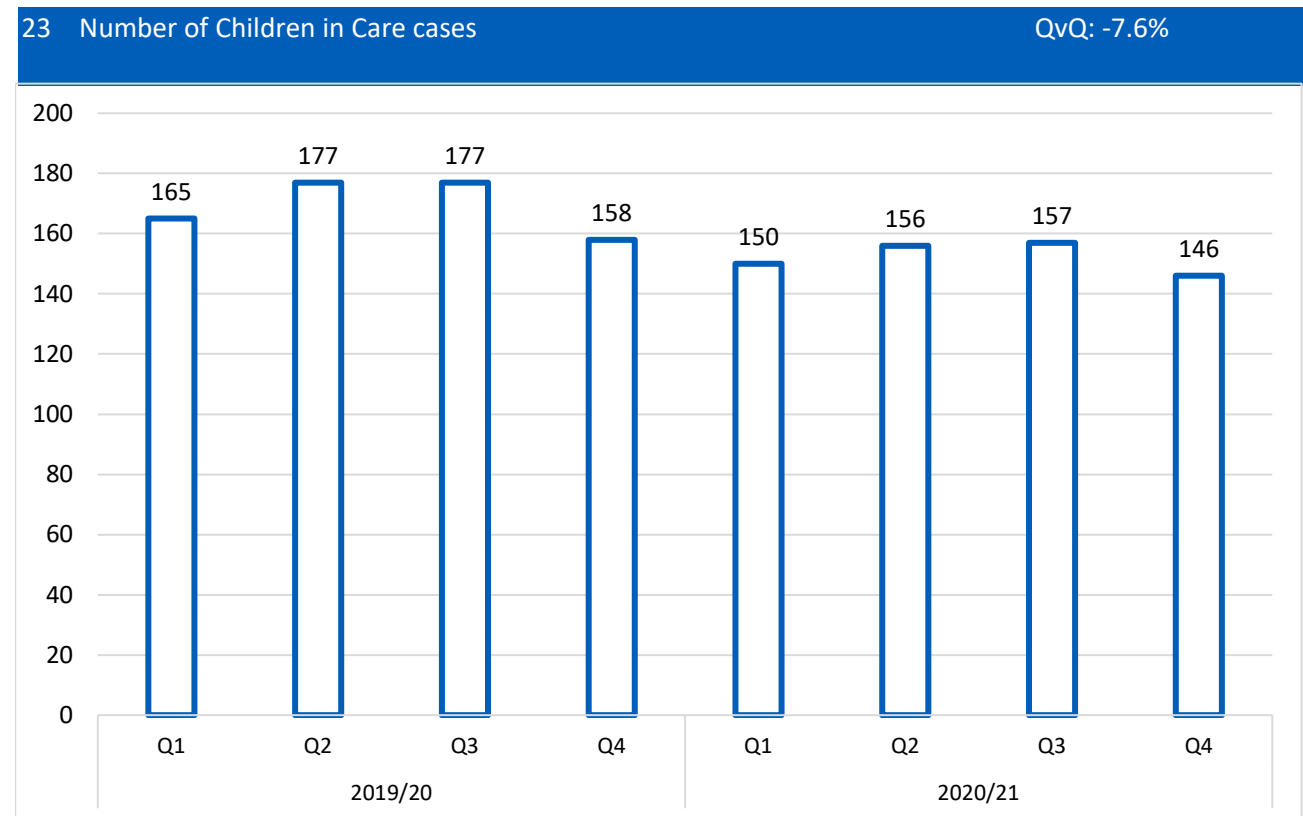
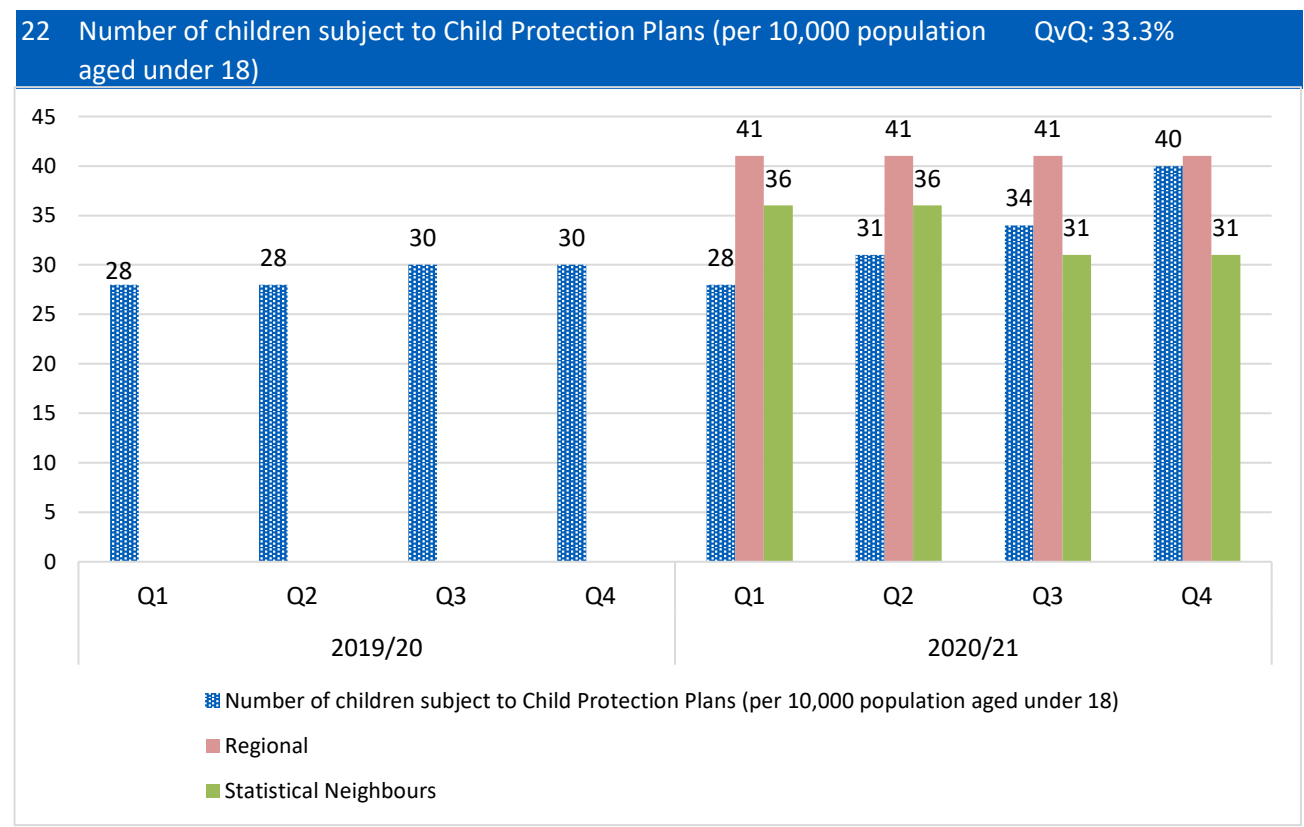
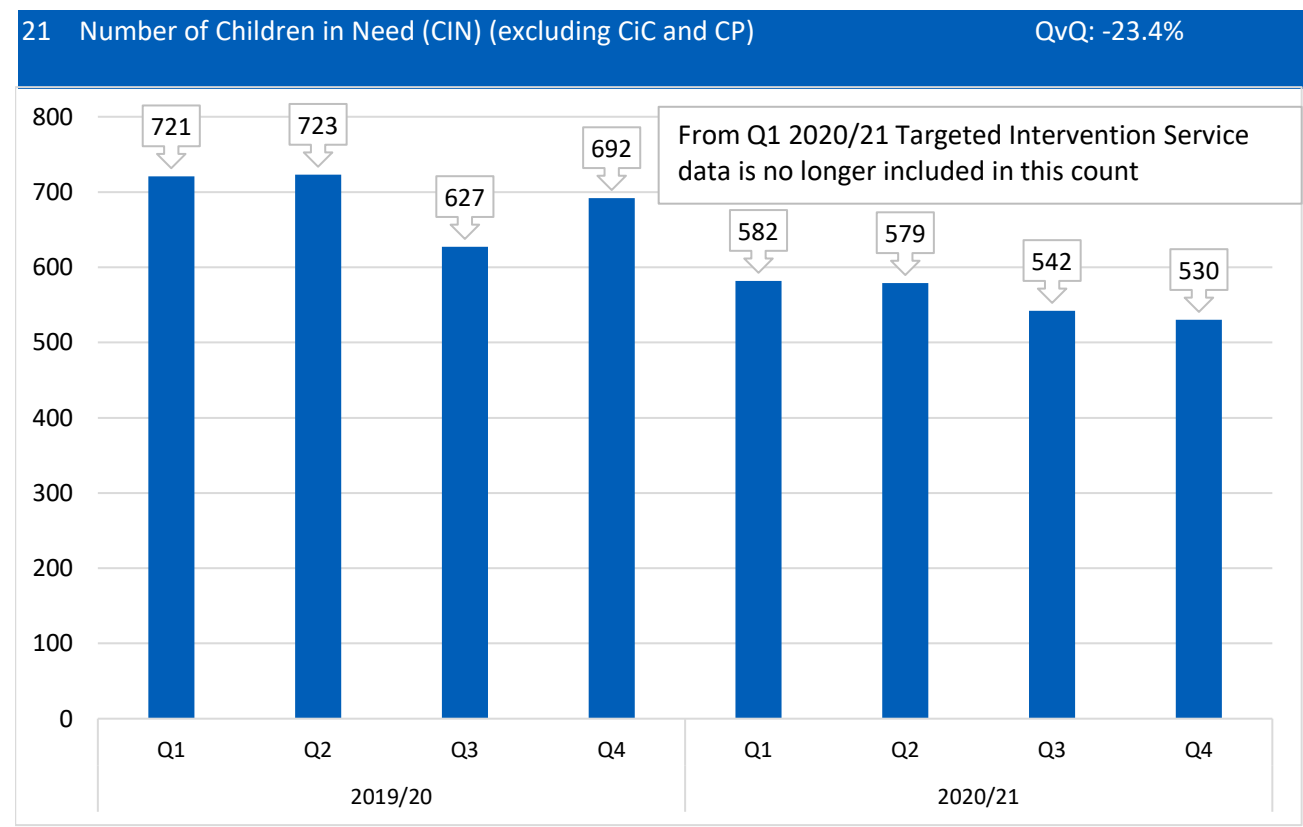


20 Number of S47 (Child Protection) enquiries initiated QvQ: 7.7%



Appendix A: Influencer Measures Dashboard 2020/21 (current qtr v same qtr last year)

Economy (Grey) | Social Care (blue) | Environment (Green)



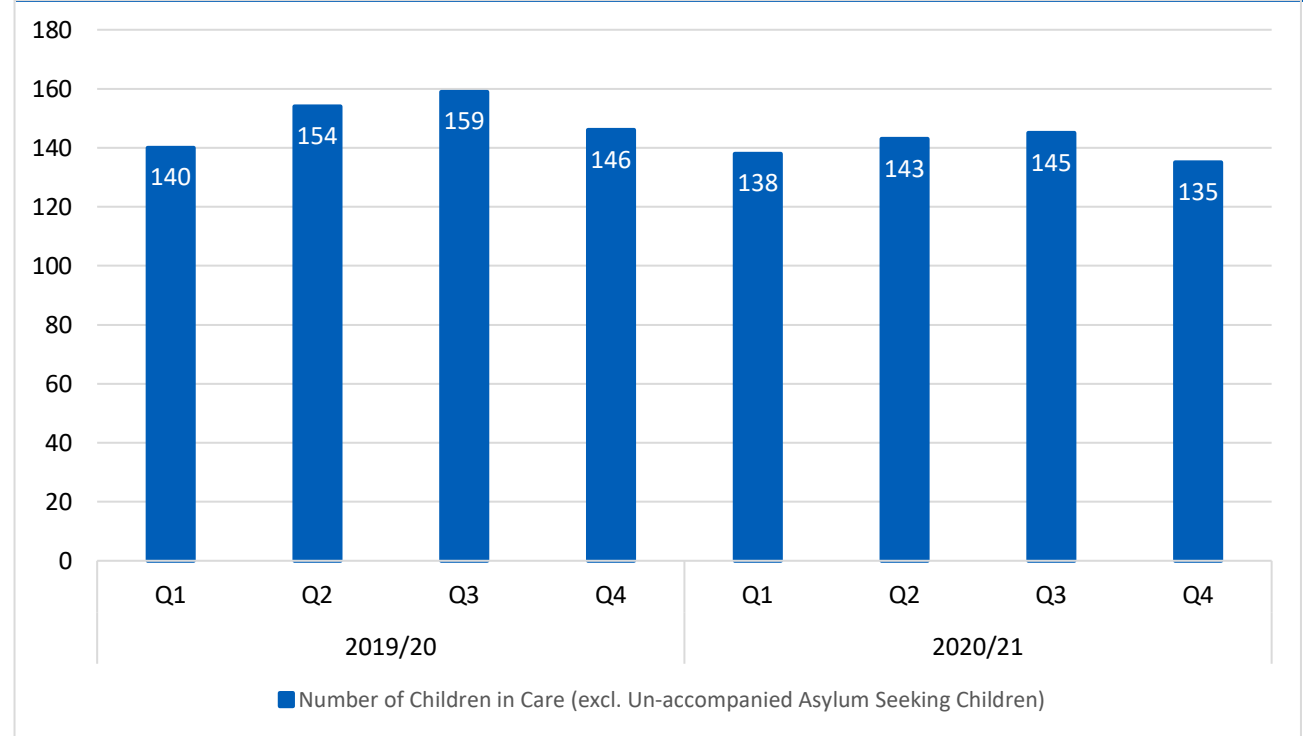
Appendix A: Influencer Measures Dashboard 2020/21 (current qtr v same qtr last year)

Economy (Grey) | Social Care (blue) | Environment (Green)

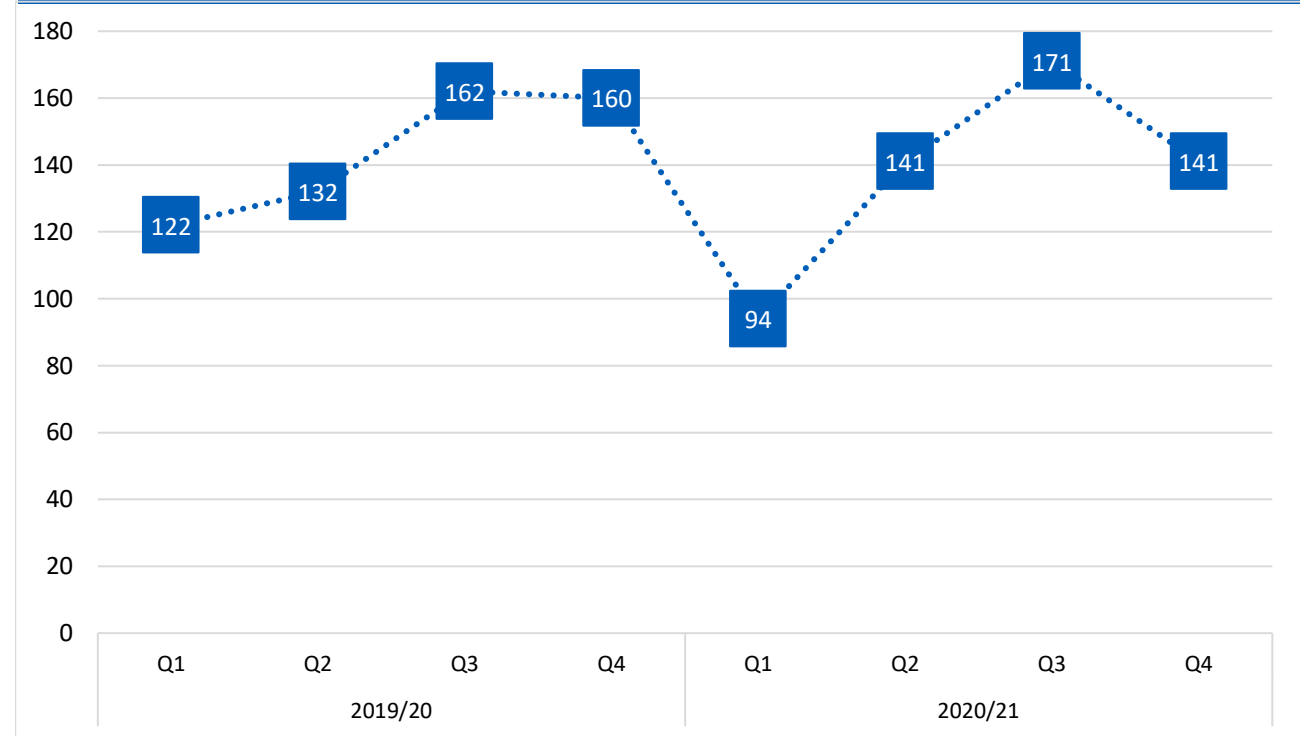
25 Level of first time entrants into the Youth Justice System (per 100,000 under 10 to 17 year olds) (12 month rolling) QvQ: -

**No data currently available as the PNC computers are not currently accessible at the Ministry of Justice.
Last available data was 139 for January 2019 - December 2019.

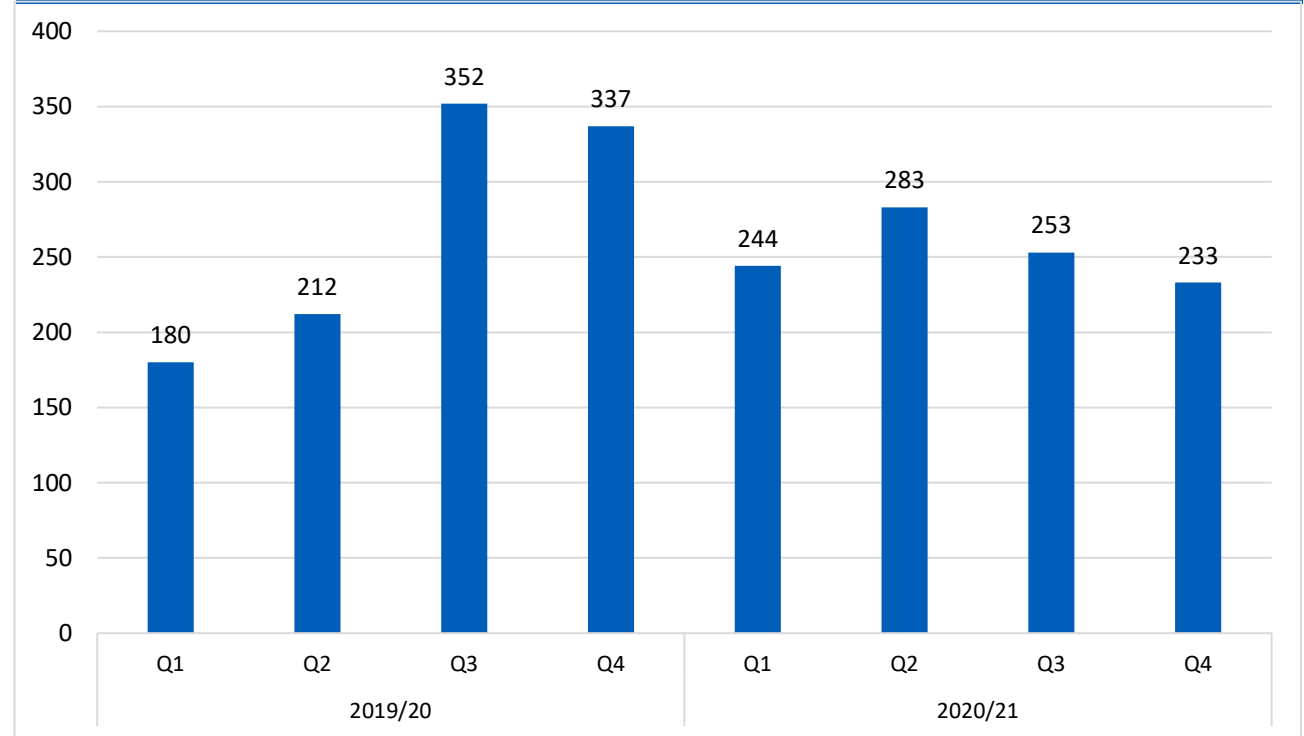
26 Number of Children in Care (excl. Un-accompanied Asylum Seeking Children) QvQ: -7.5%



27 Number of referrals to the Emotional Health Triage (EHT) QvQ: -11.9%

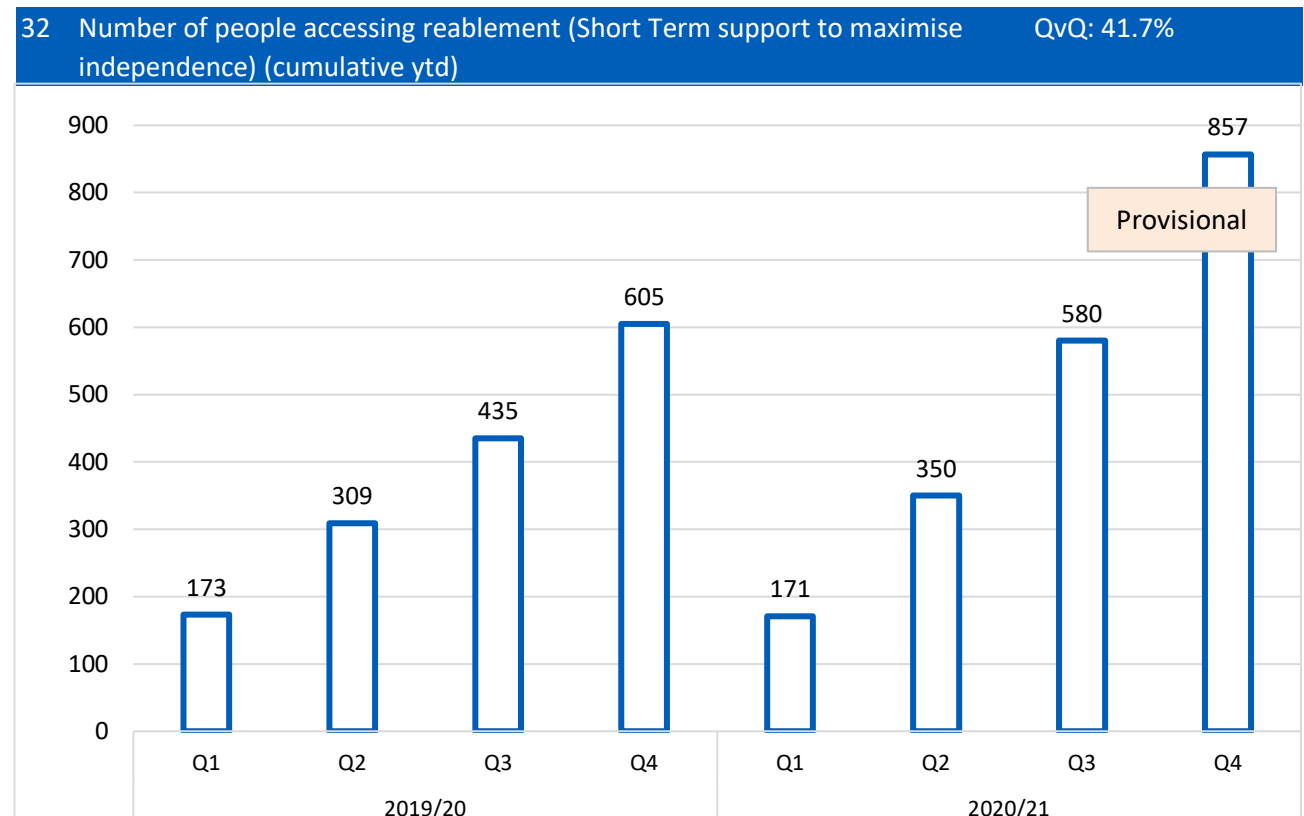
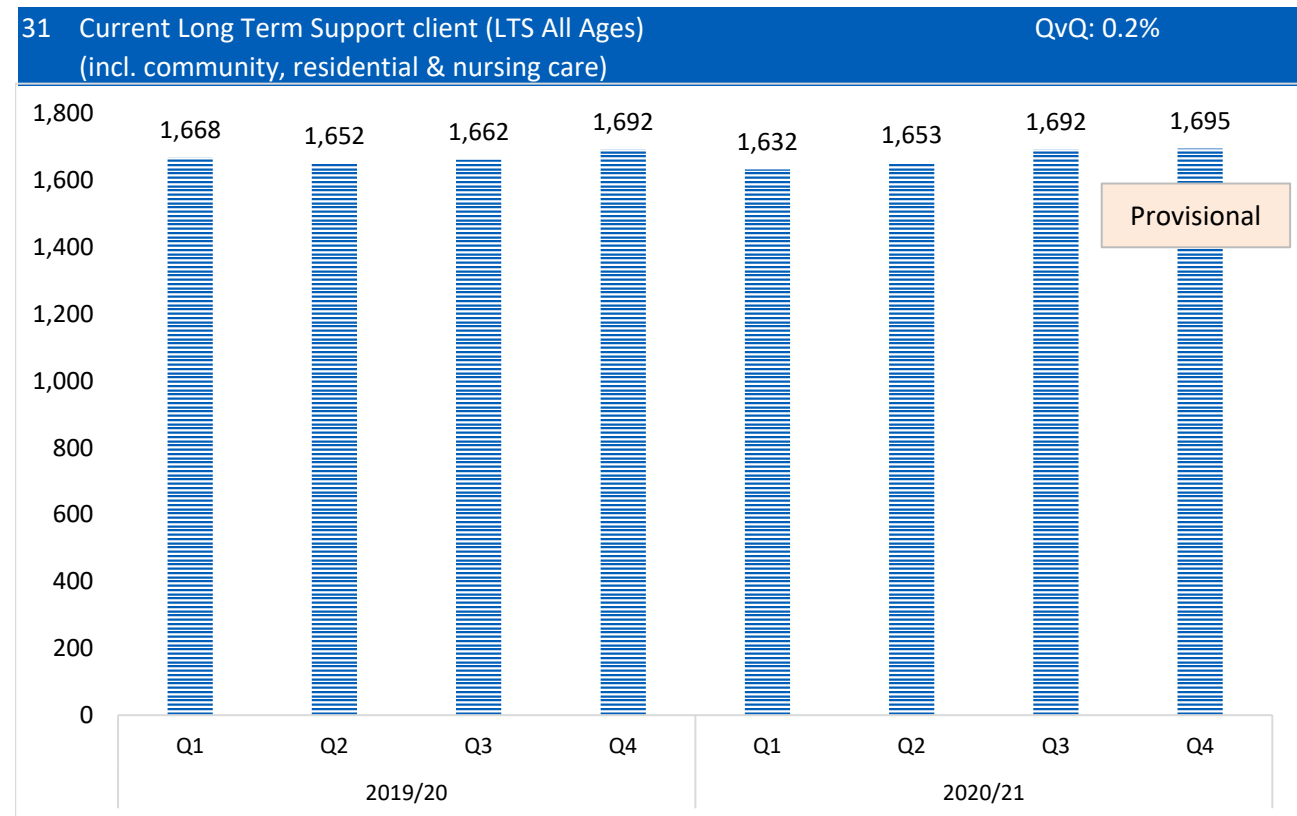
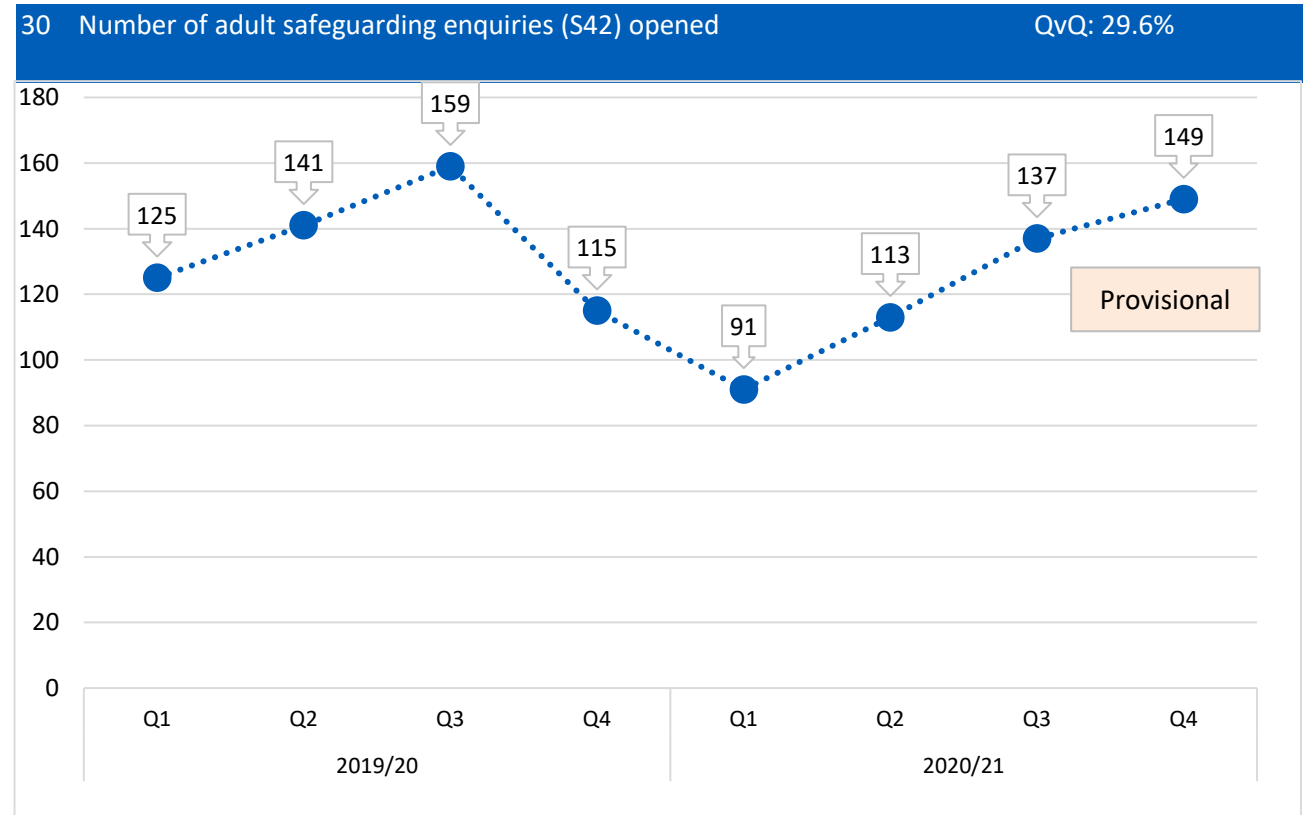
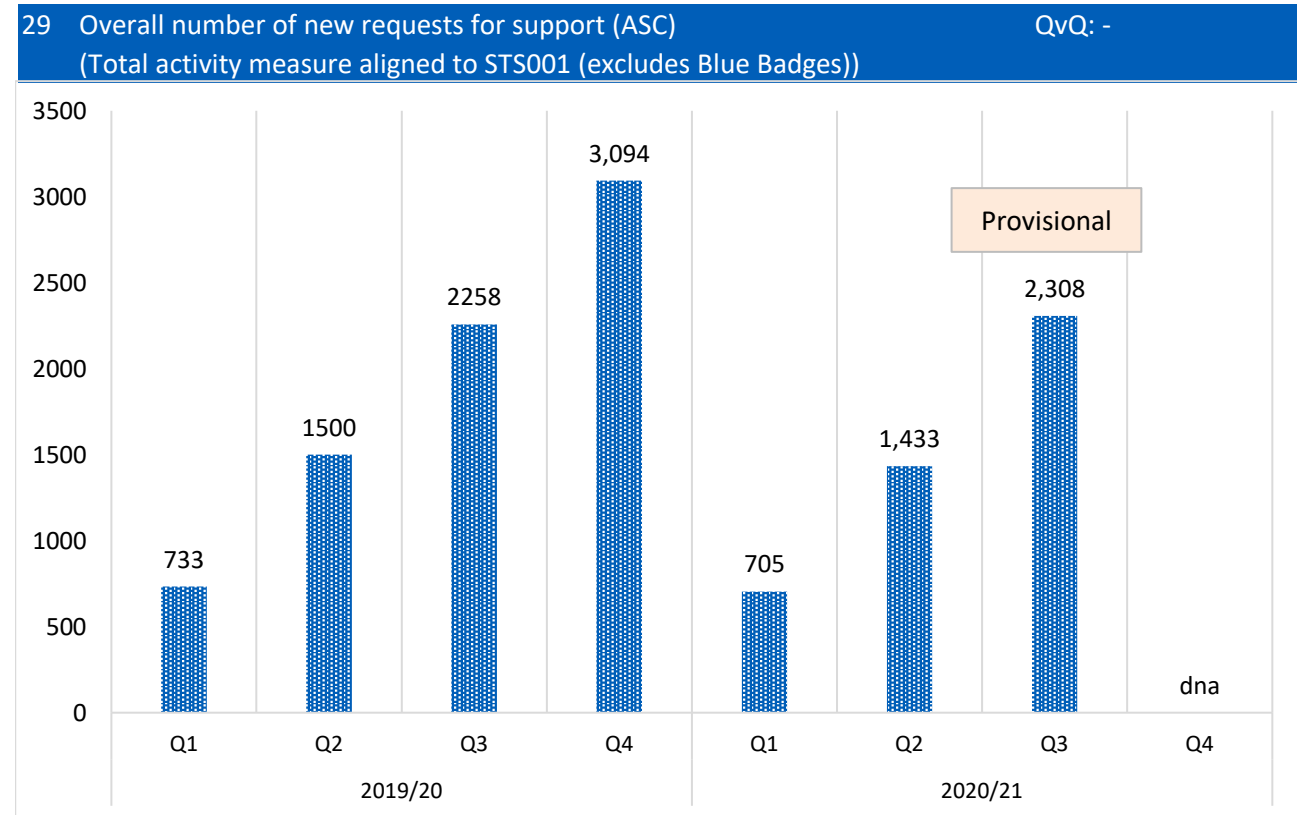


28 Number of active involvements receiving intervention from the Emotional health Academy (EHA)(Total CYP) QvQ: -30.9%



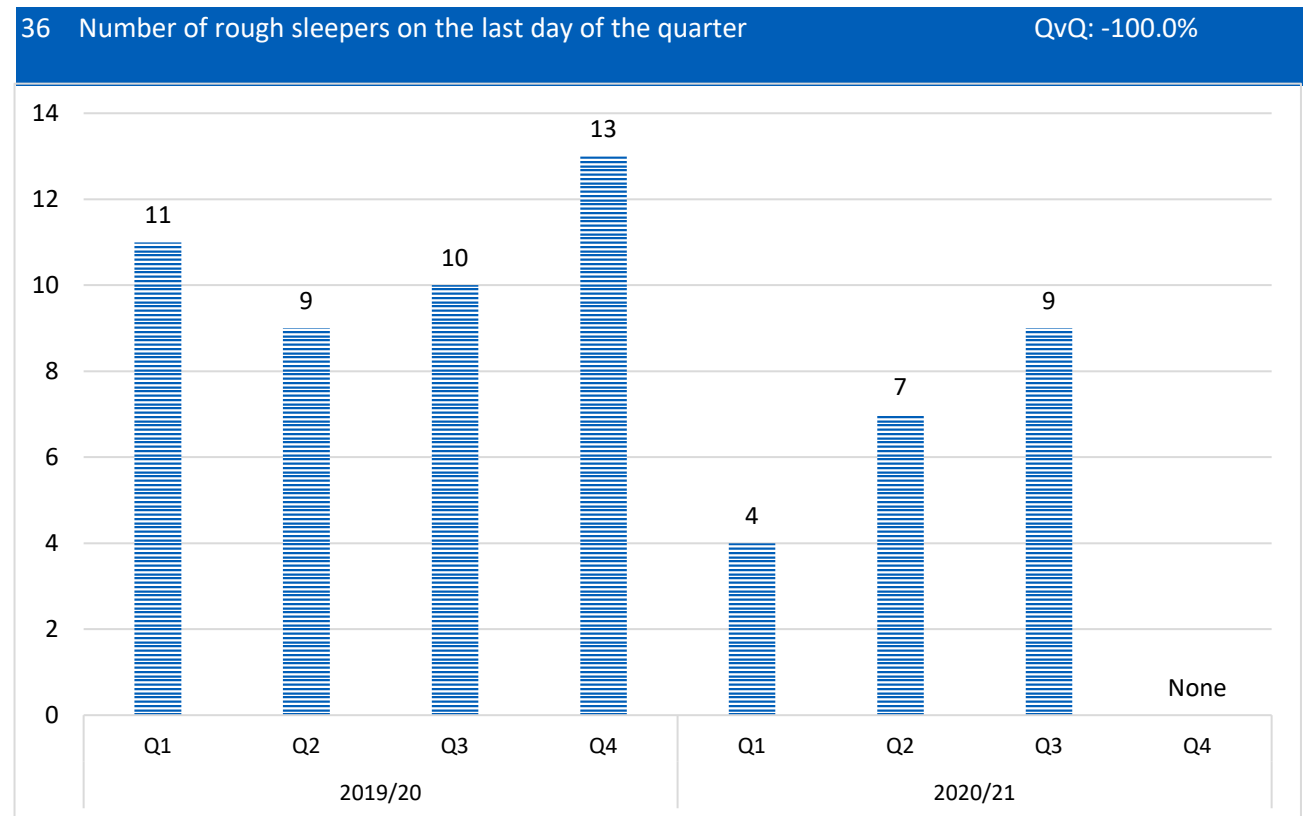
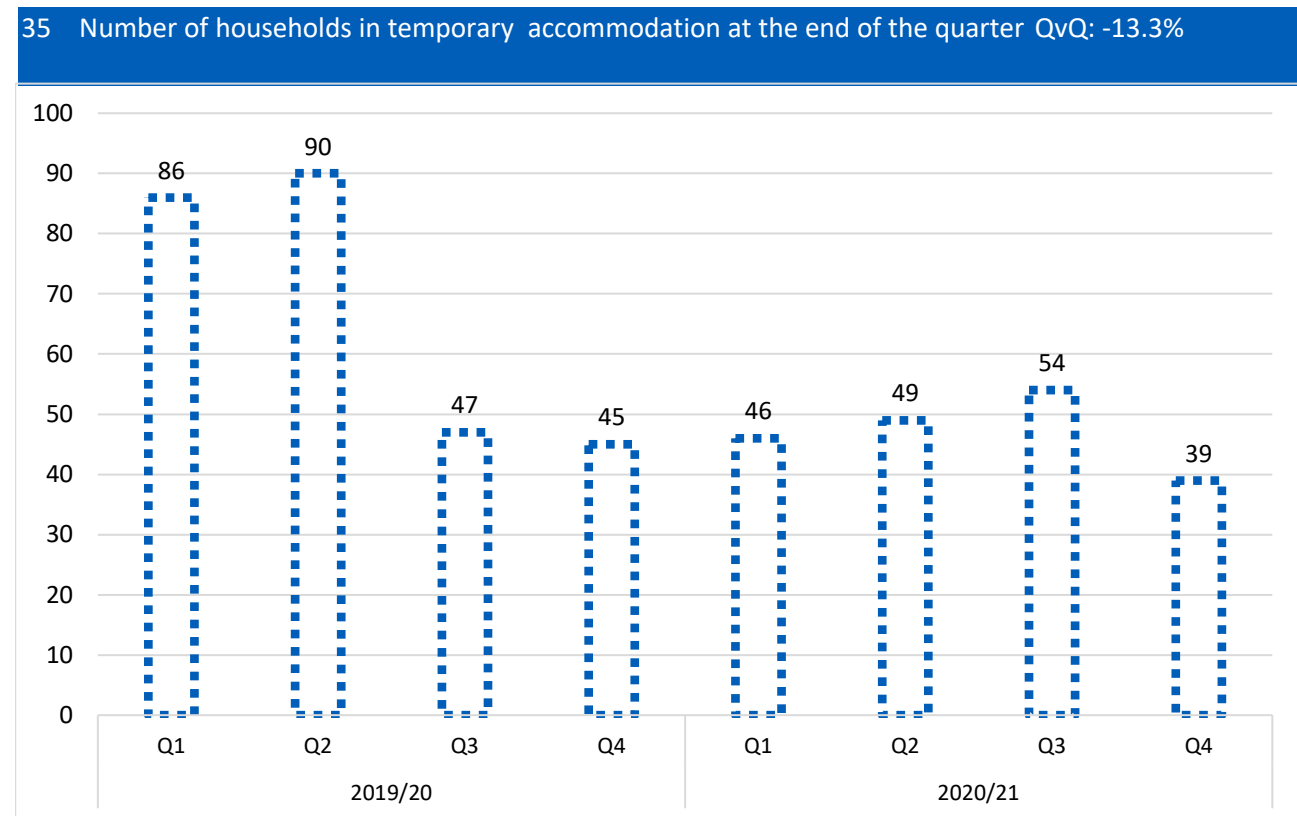
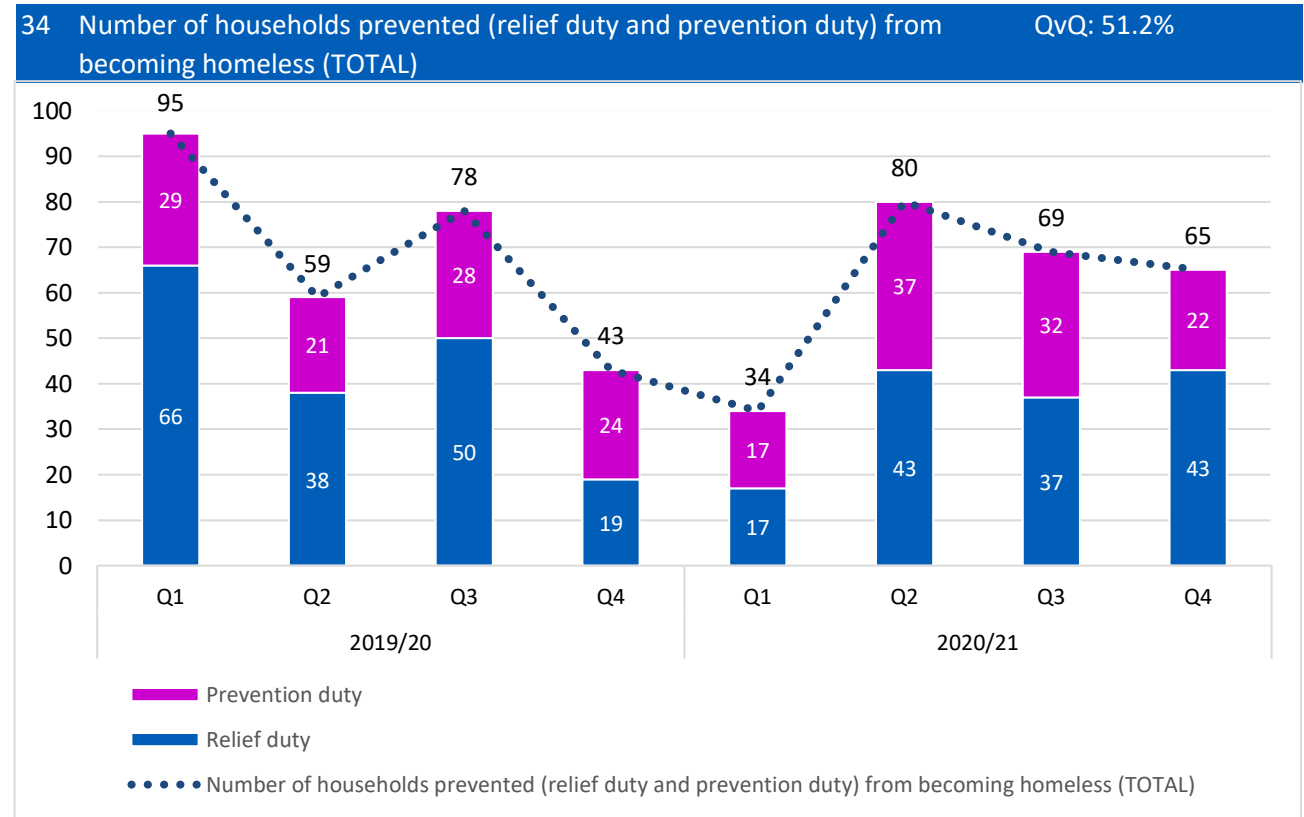
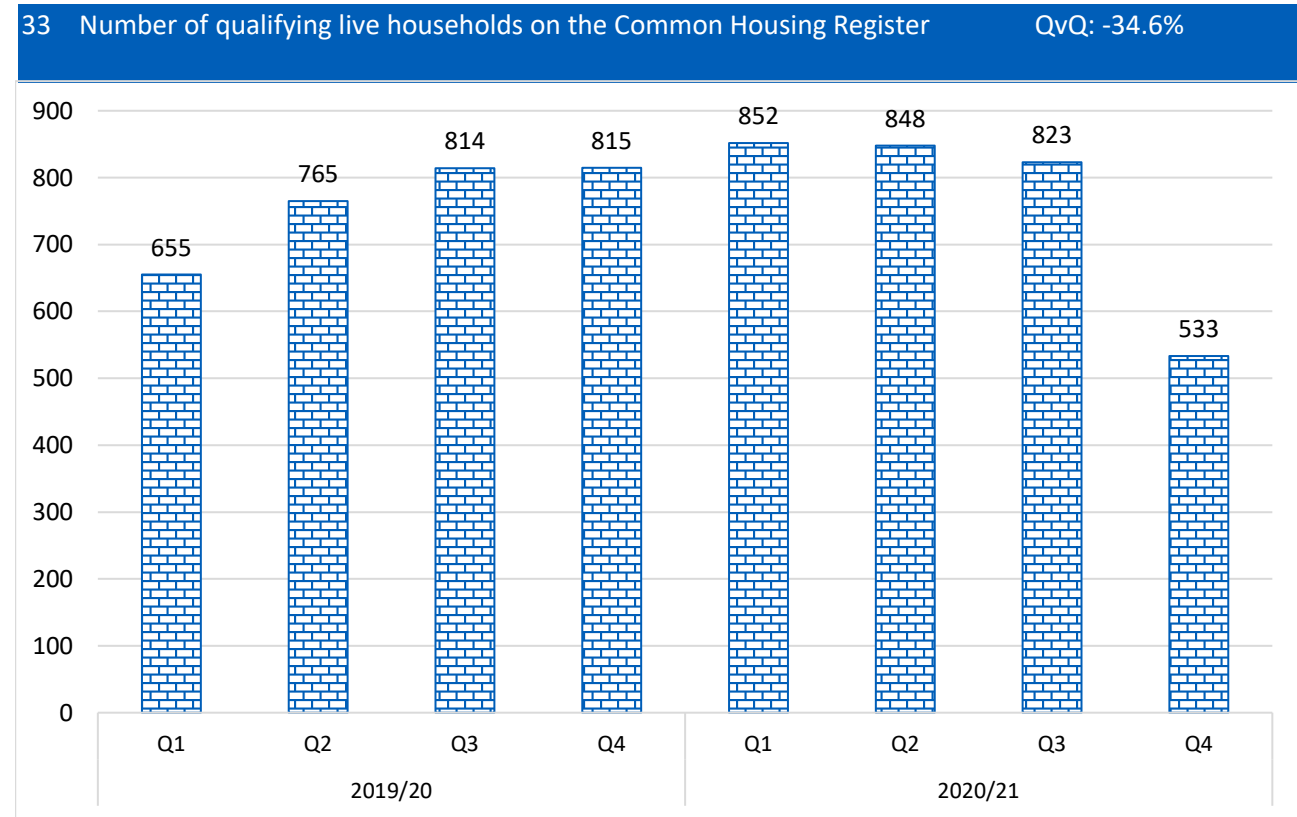
Appendix A: Influencer Measures Dashboard 2020/21 (current qtr v same qtr last year)

Economy (Grey) | Social Care (blue) | Environment (Green)



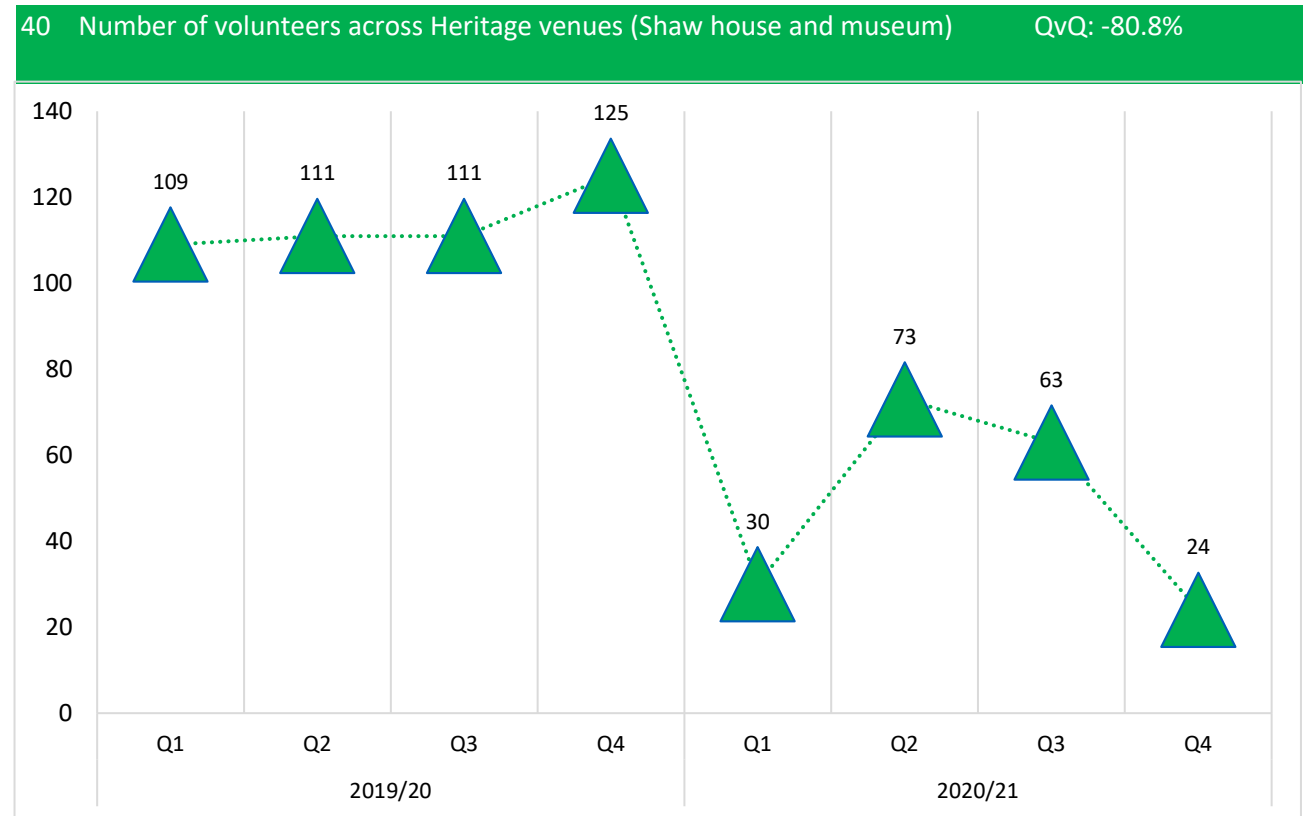
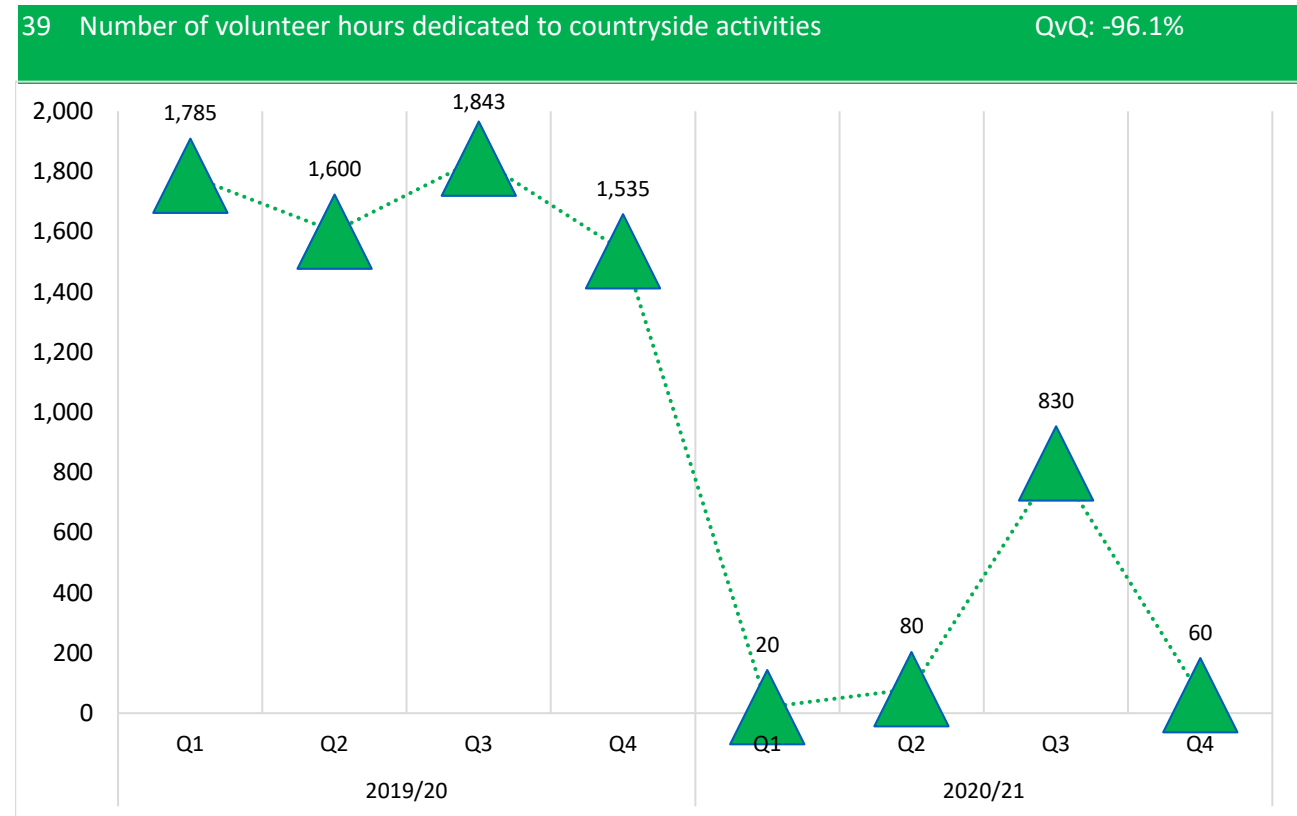
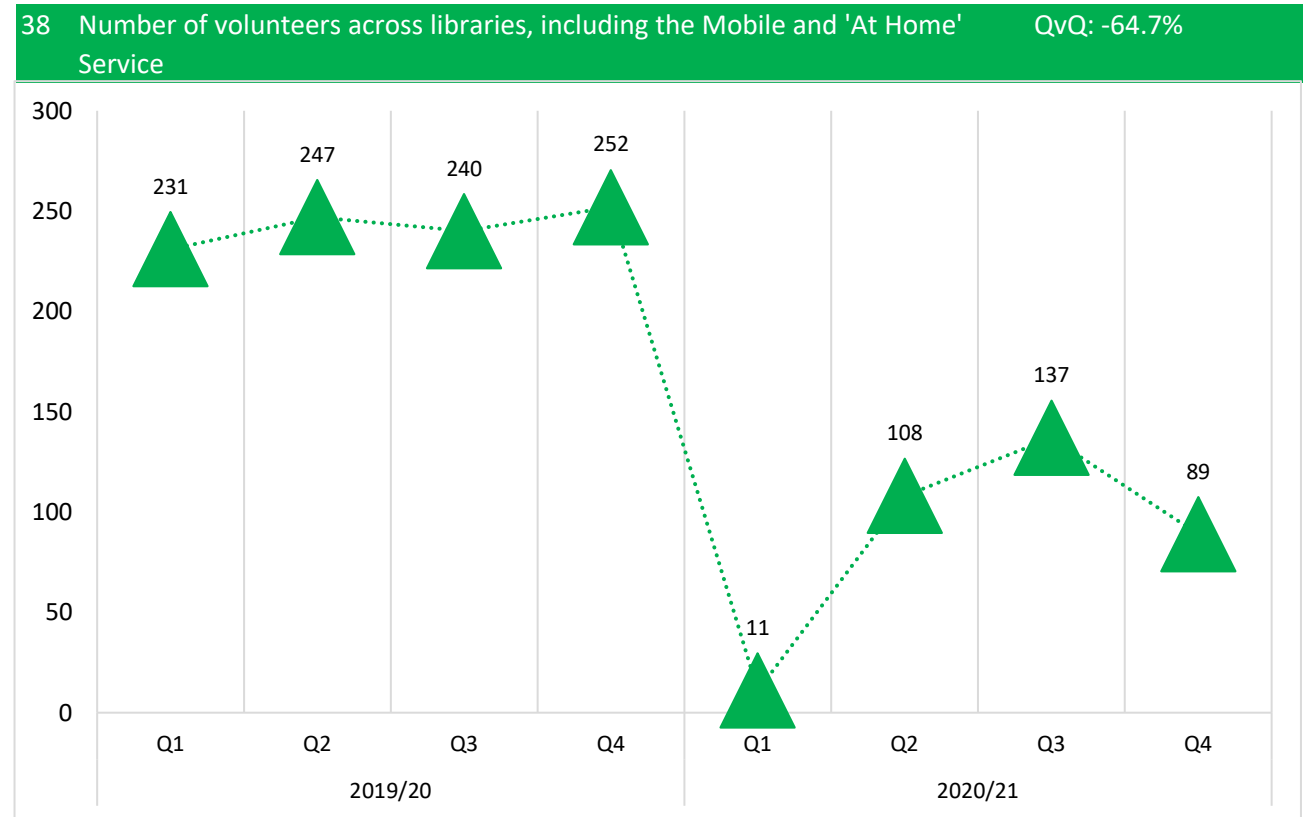
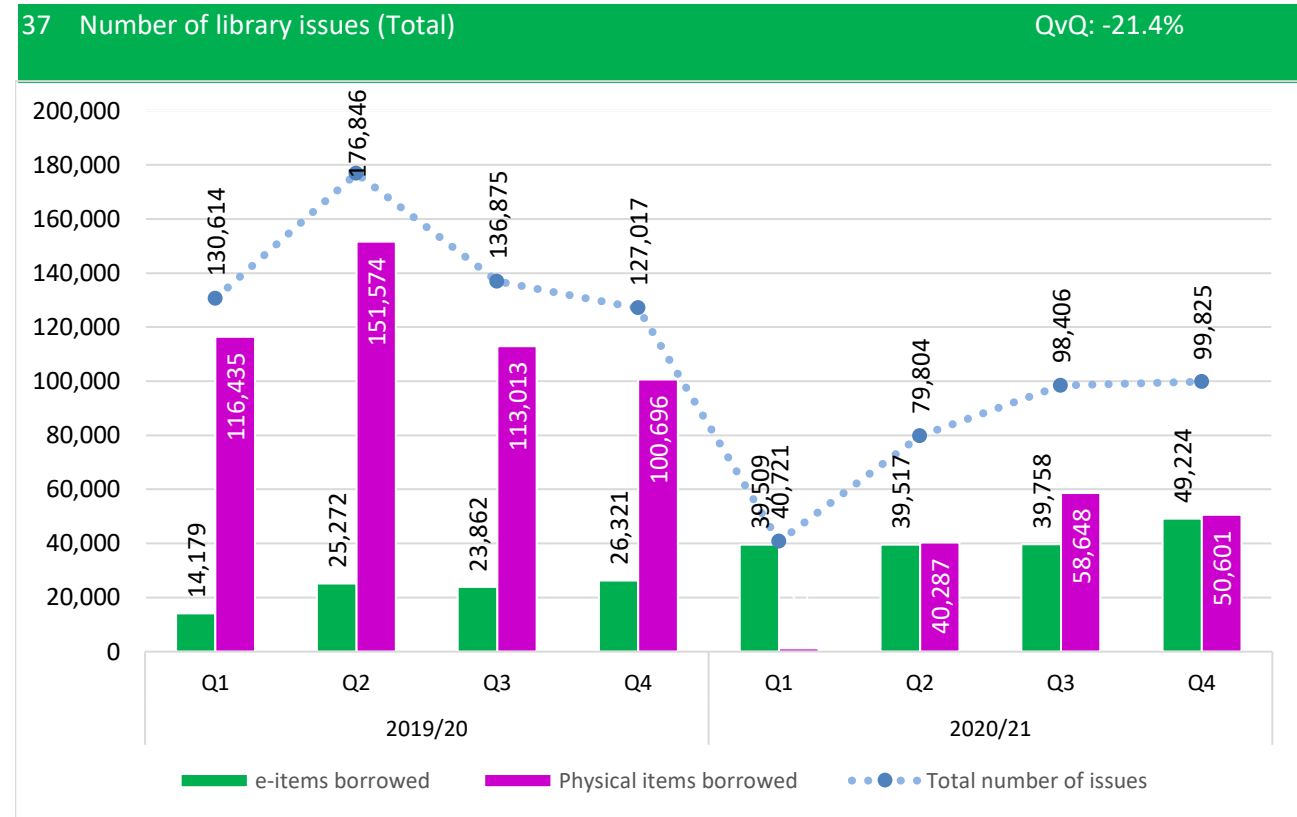
Appendix A: Influencer Measures Dashboard 2020/21 (current qtr v same qtr last year)

Economy (Grey) | Social Care (blue) | Environment (Green)



Appendix A: Influencer Measures Dashboard 2020/21 (current qtr v same qtr last year)

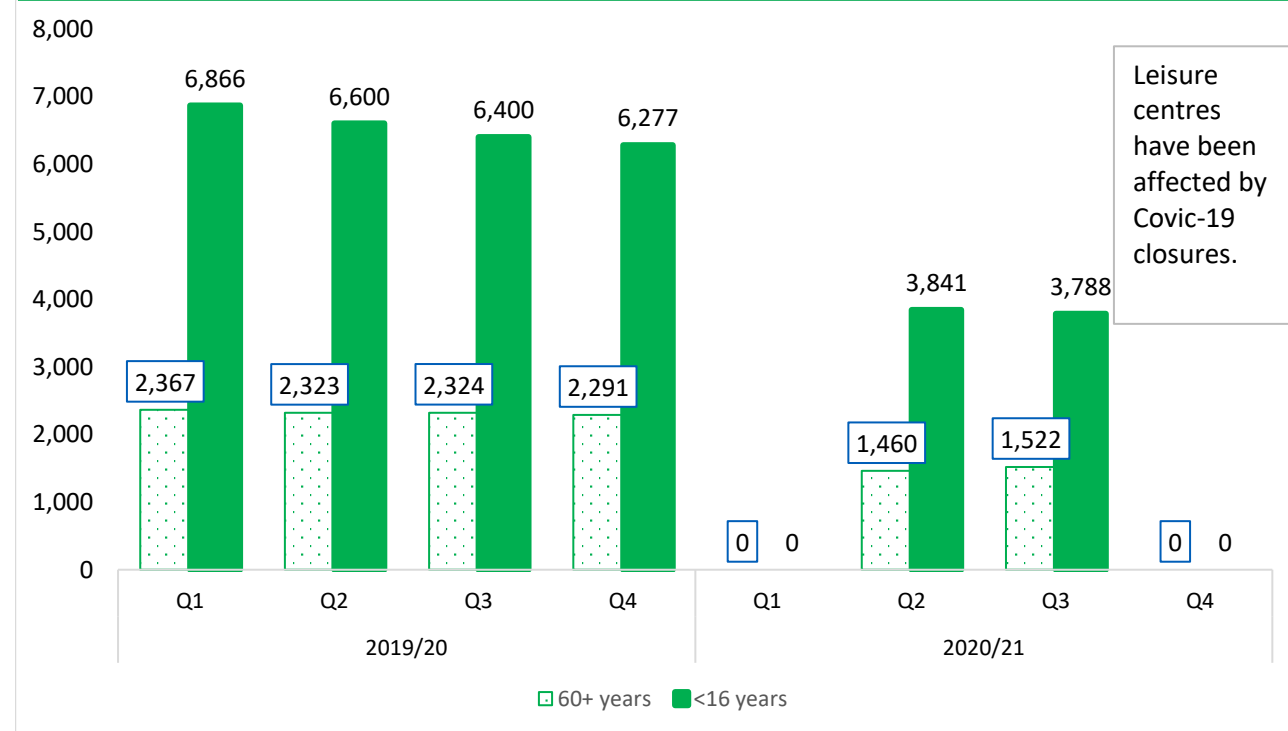
Economy (Grey) | Social Care (blue) | Environment (Green)



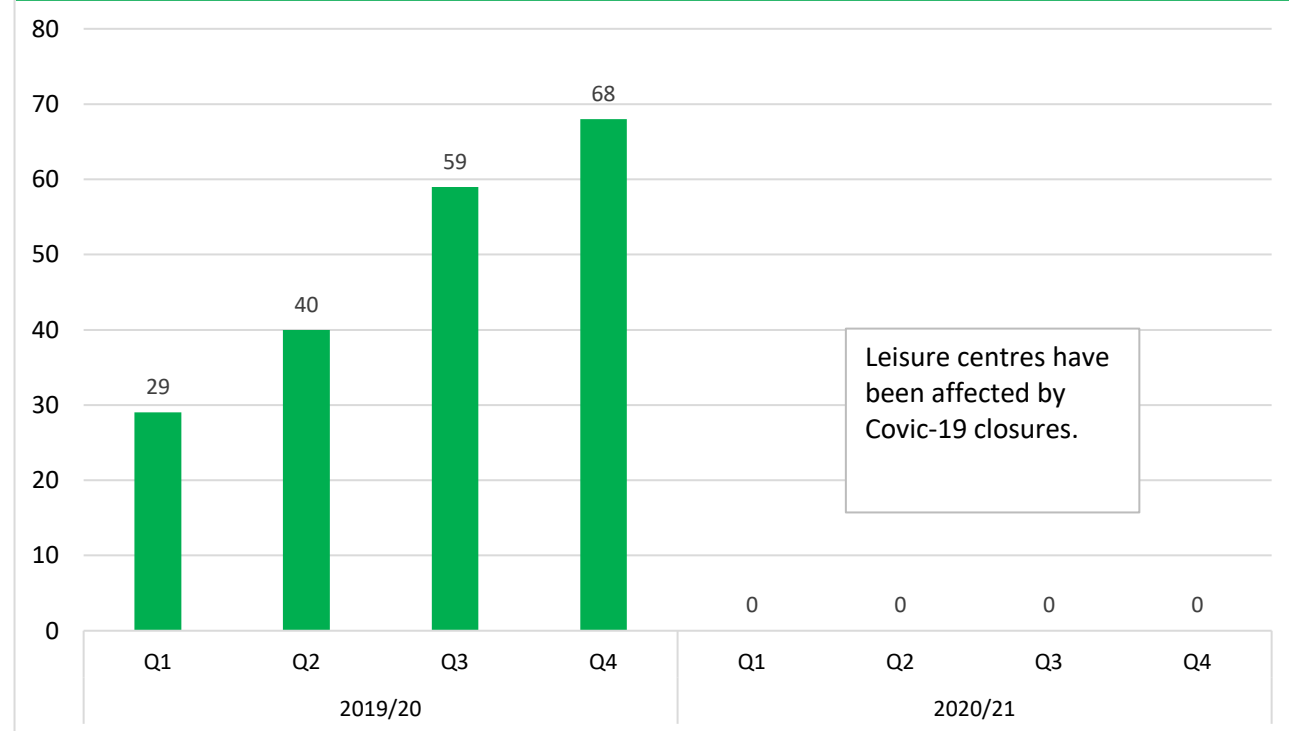
Appendix A: Influencer Measures Dashboard 2020/21 (current qtr v same qtr last year)

Economy (Grey) | Social Care (blue) | Environment (Green)

41 Number of individuals aged 60 years and over who have used a sports or leisure centre in previous 12 months QvQ: -100.0%
 Number of individuals aged under 16 years who have used a sports or leisure centre in previous 12 months QvQ: -100.0%



42 Number of Children in Care (and those care leavers aged 18 to 25 who left care due to age) who access a leisure centre QvQ: -100.0%



Appendix A: Influencer Measures Dashboard 2020/21 (current qtr v same qtr last year)

Economy (Grey) | Social Care (blue) | Environment (Green)

